

FX-MX05

4K 4x4 HDMI Matrix

Dear Customer

Thank you for purchasing this product. For optimum performance and safety, please read these instructions carefully before connecting, operating or adjusting this product. Please keep this manual for future reference.

ABLE OF CONTENTS

Feature

Introduction

Specifications

Package Contents

Panel Descriptions

Connecting and Operating

Typical Application

Product Service

Warranty

Feature

- Supports resolutions up to 1080p@60HZ,48-bit deep color, 4k@30HZ.
- Allows any source to be displayed on multiple displays at the same time.
- Allows any HDMI display to view any HDMI source at any time.
- Dolby TrueHD and DTS-HD master audio pass through HDMI output.
- Advanced EDID management for rapid integration of sources and displays.
- Multiple switching mode, push-in button, IR remote control, and RS-232 control.
- Easy installation with rack-mounting ears.
- Full 3D pass- through.

INTRODUCTION

It is 4K HDMI Matrix 4x4, supports HDCP2.2. It offers HD video solution for super market, shopping mall; HDTV, STB, DVD and projector factory; data control center; conference rooms; education and training; luxurious house; home theaters etc.

SPECIFICATIONS

Bandwidth	2.97Gbps per color
Video Input Connectors	4xHDMI Type A, 19-pin, female, locking
Video Output Connectors	4xHDMI Type A, 19-pin, female, locking
RS-232 serial port	DB-9, female
IR Input ports	5x3.5mm stereo jack
IR Output ports	4x3.5mm stereo jack
Rack-Mountable	Rack ears included
Dimensions(WxHxD)	256MMx144MMx43MM, without feet
Weight	1.8 kg
Operating Temperature	-5 to +65°C(+23 to +149°F)
Storage Temperature	-4°F to 140°F (-20°C to 60°C)
Power Supply	12V/2A DC

Note: Specifications are subject to change without notice. Mass and dimensions are approximate.

PACKING CONTENTS

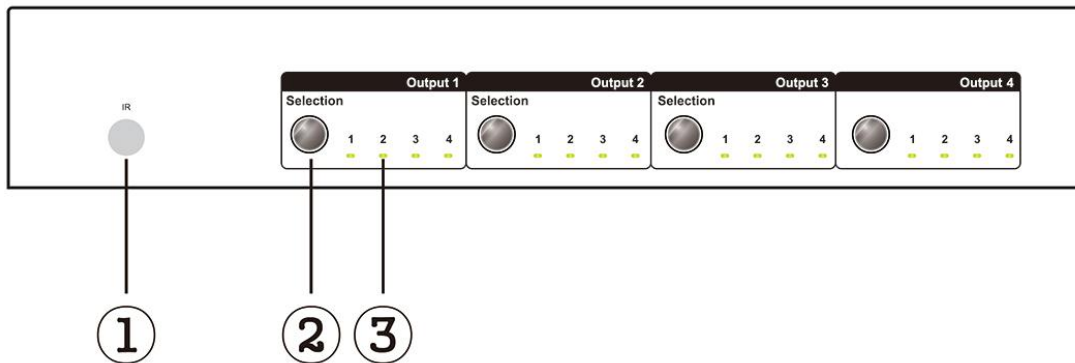
1. MX05.
2. 1x 12V2A DC power supply.
3. 1x Remote control.

4. 4x Wide Band IR cable
5. 4x IR TX cables.
6. 1x IR RX cables.
7. 1x mounting kit.
8. 1x CD for control software & user manual.

Notes: Please confirm if the product and the accessories and all in duded, if not please contact with the dealers.

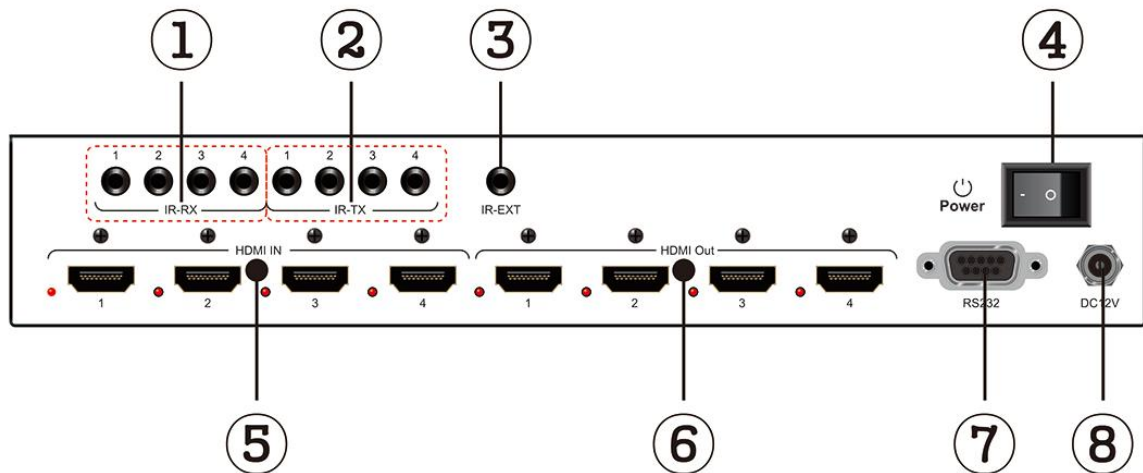
PANEL DESCRIPTION

Front Panel



1. IR receiver window---Receive the IR from the remote control of HDMI Matrix.
2. HDMI input selection button 1 to 4---Press to select the input from 1 to 4.
3. Input LED indicator---Indicate the status of the input for the matrix.

Rear Panel



- ① IR inputs 1 to 4 ---- 3.5mm stereo phone-jack.
- ② IR outputs 1 to 4 ---- 3.5mm stereo phone-jack.
- ③ IR extension receiver input ---- 3.5mm stereo phone-jack.
- ④ Power switch---- Press to power on/off the matrix.
- ⑤ HDMI inputs 1 to 4----Connect HDMI sources.
- ⑥ HDMI outputs 1 to 4----Output for displays, AVR etc.
- ⑦ RS232 female port----Connect to the PC using RS232 cable.
- ⑧ Power port---Use included DC adaptor to power the matrix switcher.

CONNECT AND OPERATE

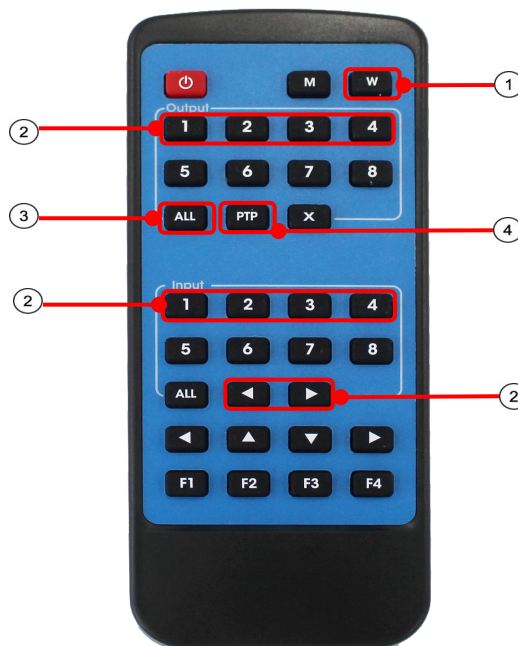
- 1) Connect the HDMI input sources (such as HD-DVD, PS3, STB etc) into FX-MX05.
- 2) Connect the HDMI outputs (such as HD-LCD, HD-DLP) into FX-MX05.
- 3) Power on the input source you want to show.
- 4) Connect the power supply into FX-MX05 and turn on the display you want to watch.
- 5) Use remote or push the button to choose input source.

Attention: Insert / Extract cables gently.

Typical Application



Local IR remote control.



- ① Press "M" button to switch to "DIP Switch" mode for EDID Setting.
- ② OUTPUT-X select INPUT-Y:
 - A. Press OUTPUT-X (X means 1 to 4 of outputs) Press INPUT-Y (Y means 1 to 4 of inputs)
 - B. Press OUTPUT-X (X means 1 to 4 of outputs), Press the left and right arrow buttons to select the input.
- ③ All outputs select INPUT-Y: Press ALL button in zone OUTPUT Press INPUT-Y button (Y means 1 to 4 of inputs), then INPUT-Y switched to ALL OUTPUTS.
- ④ Mirror all inputs and outputs (Ex. Input 1 to output 1, input 2 to output 2, etc): Press PTP button in Zone OUTPUT.

DIP Switch for EDID Setting

Press "M" button, switch to "DIP Switch" mode to choose the EDID.

DIP Switch	EDID
0000	1080P_2CH(PCM)
0001	1080i_audio7.1
0010	1080P_audio5.1
0011	1080i_2CH(PCM)
0100	1080i_audio7.1
0101	1080i_audio5.1
0110	1080P_3D_2CH(PCM)
0111	1080P_3D_audio7.1
1000	1080i_3D_audio5.1
1001	4K30Hz_2CH(PCM)
1010	4K30Hz_audio7.1
1011	4K30Hz_audio5.1

RS-232 Pin Assignment

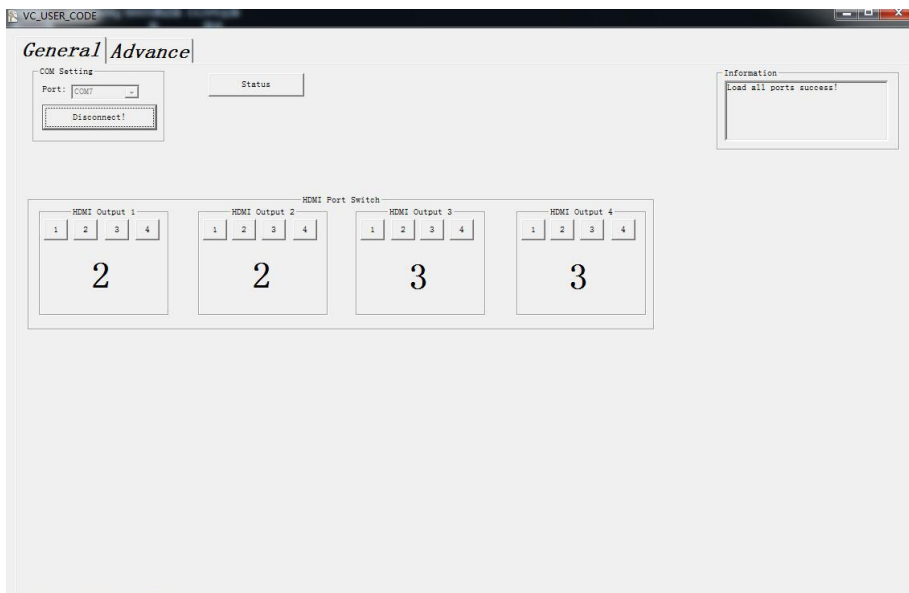
Matrix		Remote Control Console	
PIN	Assignment	PIN	Assignment
1	NC	1	NC
2	Tx	2	Rx
3	Rx	3	Tx
4	NC	4	NC
5	GND	5	GND
6	NC	6	NC
7	NC	7	NC
8	NC	8	NC
9	NC	9	NC

Baud Rate: 57600 bps

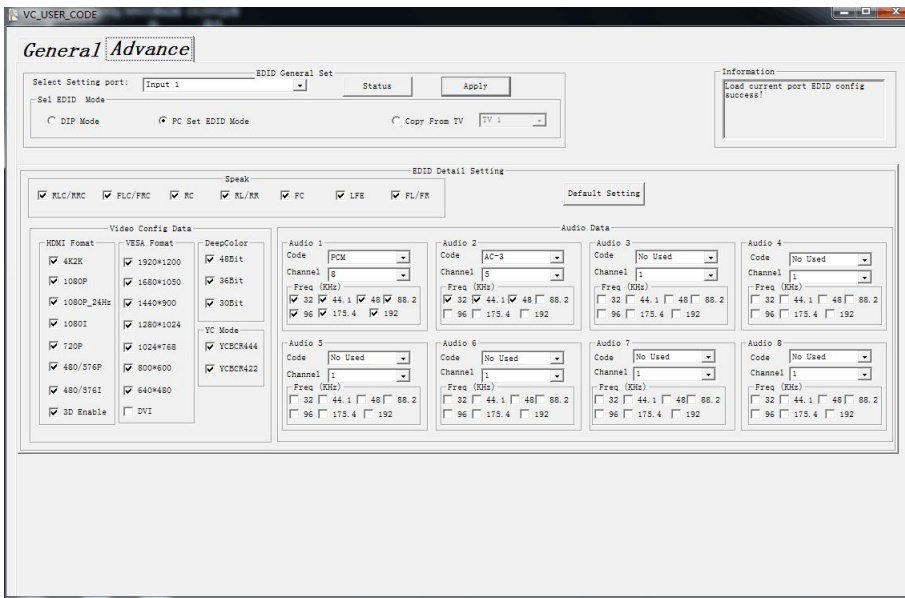
Data Bit: 8-bit Parity: None Stop Bit: 1-bit

Flow Control: None

RS232 Control



Connect RS232 cable to PC, open the software , choose the COM port and connect.
Click "General ", you can choose the HDMI input and for each HDMI out as below picture



Click "Advance", choose the "HDMI input", then click "PC Set EDID Mode" to set EDID, such as video format, audio format etc. After setting the EDID, click "Apply" to finish the operation

Note: If you need change to "DIP Switch "mode for EDID setting , please press "M" button on the remote controller.

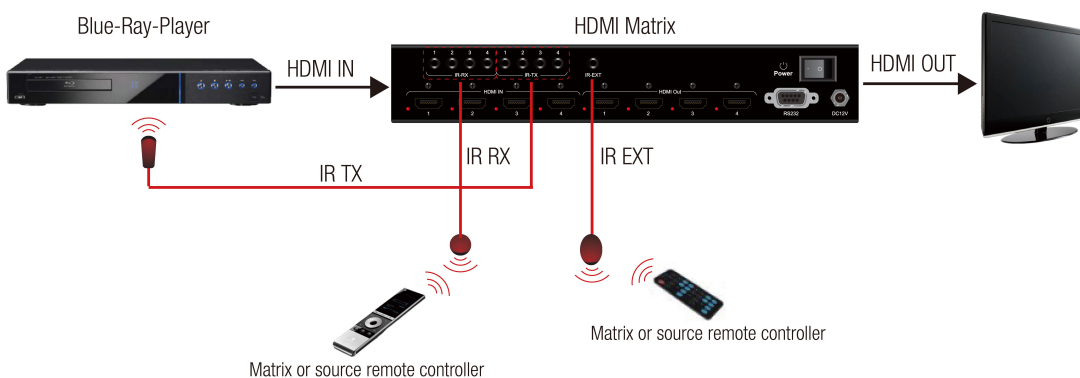
IR extender control



User can use the IR receiver cable to change the IR receiver position.

If controlling the HDMI Matrix through the 1/8" (3.5 mm) input jack on the rear panel, connect the IR cable directly to the matrix rear IR receiver extension sockets.

IR system



1) Control the sources from the sinks

- Step1: Connect 4pcs "IR TX" cables to "IR TX" ports; connect 4pcs "IR RX" cables to "IR RX" ports
- Step2: Affix the 4xIR emitter of "IR TX" cables to the IR window of the 4xHDMI source

Step3: Aim the remote control of HDMI source which you choosed to the "IR RX" cable which connected to the Matrix.

For example:

If you choosed HDMI source1, then just aim the remote control of HDMI source1 to the "IR RX" cable which connected to the Matrix.

2) Control the HDMI Matrix from "IR RX" port.

Aim the remote of the HDMI Matrix to the "IR RX" cable which connected to the Matrix.

MAINTENANCE

Clean this unit with a soft, dry cloth. Never use alcohol, paint thinner or benzene to clean this unit.

PRODUCT SERVICE

1) **Damage requiring service:** The unit should be serviced by qualified service personnel if:

- (a)The DC power supply cord or AC adaptor has been damaged;
- (b)Objects or liquids have gotten into the unit;
- (c)The unit has been exposed to rain;
- (d)The unit does not operate normally or exhibits a marked change in performance;
- (e)The unit has been dropped or the cabinet damaged.

2) **Servicing Personnel:** Do not attempt to service the unit beyond that described in these operating instructions. Refer all other servicing to authorized servicing personnel.

3) **Replacement parts:** When parts need replacing ensure the servicer uses parts specified by the manufacturer or parts that have the same characteristics as the original parts. Unauthorized substitutes may result in fire, electric shock, or other hazards.

4) **Safety check:** After repairs or service, ask the servicer to perform safety checks to confirm that the unit is in proper working condition.

WARRANTY

If your product does not work properly because of a defect in materials or workmanship, our Company (referred to as "the warrantor") will , for the length of the period indicated as below,

(Parts(2)Year ,Labor(90) Days) which starts with the date of original purchase ("Limited Warranty period"), at its option either(a) repair your product with new or refurbished parts, or (b) replace it with a new or a refurbished product. The decision to repair or replace will be made by the warrantor.

During the "Labor" Limited Warranty period there will be no charge for labor.

During the "Parts" warranty period, there will be no charge for parts. You must mail-in your product during

the warranty period. This Limited Warranty is extended only to the original purchaser and only covers product purchased as new. A purchase receipt or other proof of original purchase date is required for Limited Warranty service.

LIMITED WARRANTY LIMITS AND EXCLUSIONS

1) This Limited Warranty ONLY COVERS failures due to defects in materials or workmanship, and DOES NOT COVER normal wear and tear or cosmetic damage. The Limited Warranty ALSO DOES NOT COVER damages which occurred in shipment, or failures which are caused by products not supplied by warrantor, or failures which result from accidents, misuse, abuse, neglect, mishandling, misapplication, alteration, faulty installation, set-up adjustments, misadjustment of consumer controls, improper maintenance, power line surge, lightning damage, modification, or service by anyone other than a Factory Service center or other Authorized Servicer, or damage that is attributable to acts of God.

2) THERE ARE NO EXPRESS WARRANTIES EXCEPT AS LISTED UNDER "LIMITED WARRANTY COVERAGE". THE WARRANTOR IS NOT LIABLE FOR INCIDENTAL OR CONSEQUENTIAL DAMAGES RESULTING FROM THE USE OF THIS PRODUCT, OR ARISING OUT OF ANY BREACH OF THIS WARRANTY. (As examples, this excludes damages for lost time, cost of having someone remove or re-install an installed unit if applicable, travel to and from the service, loss of or damage to media or images, data or other recorded content. The items listed are not exclusive, but are for illustration only.

PARTS AND SERVICE, WHICH ARE NOT COVERED BY THIS LIMITED WARRANTY, ARE YOUR RESPONSIBILITY.