

FX-MX09

4x4 HDMI2.0 Matrix , 4k@60Hz YUV4:4:4

Dear Customer

Thank you for purchasing this product. For optimum performance and safety, please read these instructions carefully before connecting, operating or adjusting this product. Please keep this manual for future reference.

ABLE OF CONTENTS

1 Feature

2 Introduction

3 Specifications

4 Package Contents

5 Panel Descriptions

6 Connecting and Operating

7 Typical Application

8 Control

9 Product Service

10 Warranty

1 Feature











- HDMI 2.0 version (Support HDMI2.0 4K50/60Hz YUV4:4:4).
- Bandwidth upto 18Gbps
- Support 3D.
- Support HDCP 2.2 input, HDCP2.2 output.
- Any one of the 4 HDMI Sources to any one of the 4 HDMI Displays
- Support Panel Control, Local IR, IR Routing, RS232 Control, IP Control
- 1U rack design, easy installment.
- Power consumption: **15watts**
- Dimension (L×W×H): **440x256x42mm**
- Net Weight: **2.4kg.**

NOTICE

Our company reserve the right to make changes in the hardware, packaging and any accompanying documentation without prior written notice.

Warning

To reduce the risk of fire, electric shock or product damage:

 <p>1. Do not expose this apparatus to rain, moisture, dripping or splashing and that no objects filled with liquids, such as vases, shall be placed on the apparatus.</p>	 <p>6. Clean this apparatus only with dry cloth.</p>
 <p>2. Do not install or place this unit in a bookcase, built-in cabinet or in another confined space. Ensure the unit is well ventilated.</p>	 <p>7. Unplug this apparatus during lightning storms or when unused for long periods of time.</p>
 <p>3. To prevent risk of electric shock or fire hazard due to overheating, do not obstruct the unit's ventilation openings with newspapers, tablecloths, curtains, and similar items.</p>	 <p>8. Protect the power cord from being walked on or pinched particularly at plugs.</p>
 <p>4. Do not install near any heat sources such as radiators, heat registers, stoves, or other apparatus (including amplifiers) that produce heat.</p>	 <p>9. Only use attachments / accessories specified by the manufacturer.</p>
 <p>5. Do not place sources of naked flames, such as lighted candles, on the unit.</p>	 <p>10. Refer all servicing to qualified service personnel.</p>

2 INTRODUCTION

It is 4K HDMI Matrix4x4, supports HDCP2.2. It offers HD video solution for super market, shopping mall; HDTV, STB, DVD and projector factory; data control center; conference rooms; education and training; luxurious house; home theaters etc.

3 SPECIFICATIONS

Operating Temperature Range	-5 to +35°C(-41 to +95 °F)
Operating Humidity Range	5 to 90 % RH (no condensation)
Input Video Signal	0.5-1.0 volts p-p
Input DDC Signal	5 volts p-p (TTL)
Signaling Rate	3.0Gbit/s
Video Format Supported	4K@60Hz/4k@30Hz/1080P/1080i/720P/576P/480P/576i/480i
Output Video	HDMI2.0 and HDMI 1.4
Audio Format Supported	DTS-HD Master Audio、Dolby trueHD etc.
Maximum Transmission Distance	<15m(if need,HDMI Extender is optional)
Power Consumption	15watts (Max.)
Dimensions	L440 x W256 x H42 mm/ L17.3"xW10"xH1.65"
Mass (Main Unit)	2.4kg

Note: Specifications are subject to change without notice. Mass and dimensions are approximate.

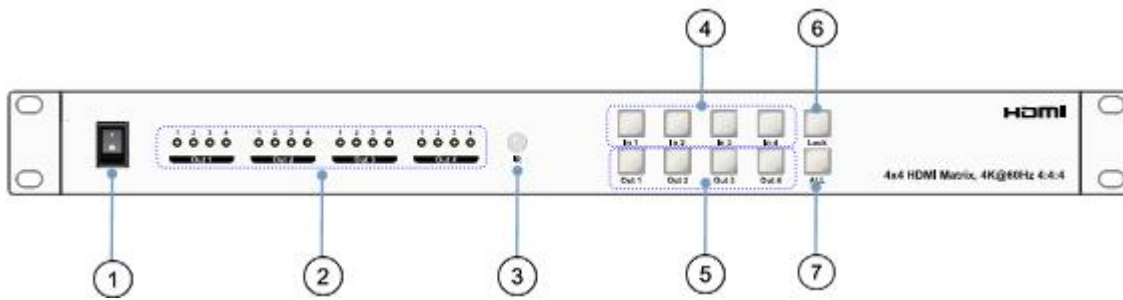
4 PACKING CONTENTS

- ① Main unit. (FX-MX09)
- ② 12V DC Power Supply.
- ③ 1x Remote controller.
- ④ 4x IR_TX cable.
- ⑤ 4x Wide Band IR RX Cable(38KHz~56KHz)
- ⑥ 1x38KHz IR Ext RX cable
- ⑦ 1xmounting kit
- ⑧ 1xCD for control software & user manual

Notes: Please confirm if the product and the accessories and all in duded, if not please contact with the dealers.

5 PANEL DESCRIPTION

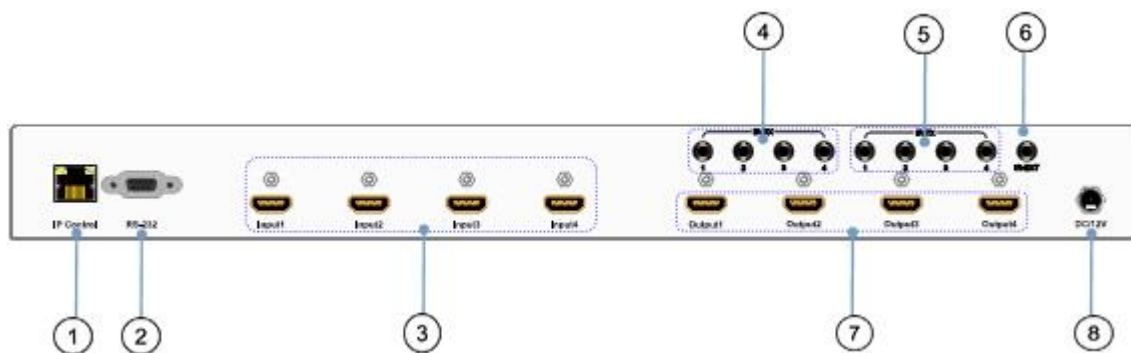
Front Panel



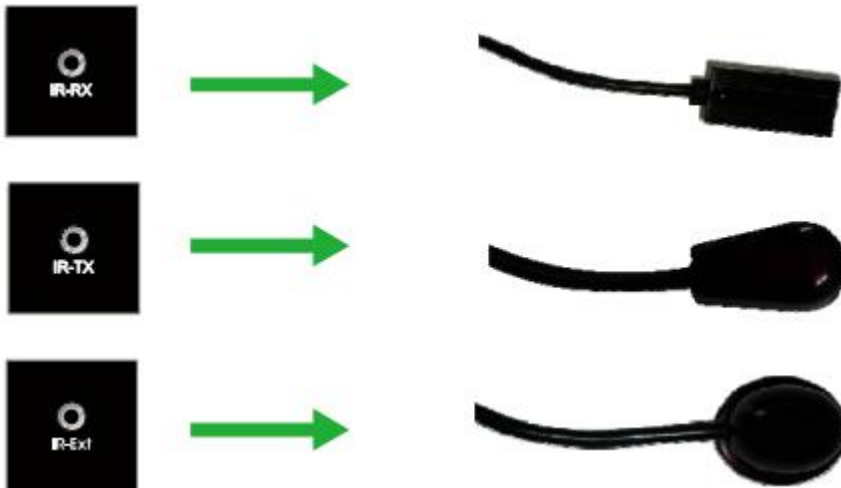
- ① Power on/off.
- ② These LED indicates the status of each output selection.
- ③ IR receive window.
- ④ Input button IN1~4: choose the desired input port from ports 1~4.
- ⑤ Output button OUT1~4: choose the desired output port from ports 1~4.
- ⑥ Lock: Press this button, then all the button on the unit is useless, which mean all the buttons locked
- ⑦ ALL: Press this button to set all the outputs to display with the same input. First press the “ALL” button then press an input number to confirm the selection.

Note:The “Lock” button will light when all the buttons are locked.

Rear Panel



- ① LAN port
- ② RS232 port
- ③ HDMI input port
- ④ IR-RX
- ⑤ IR-TX
- ⑥ IR-Ext
- ⑦ HDMI output port
- ⑧ Power input:DC12V

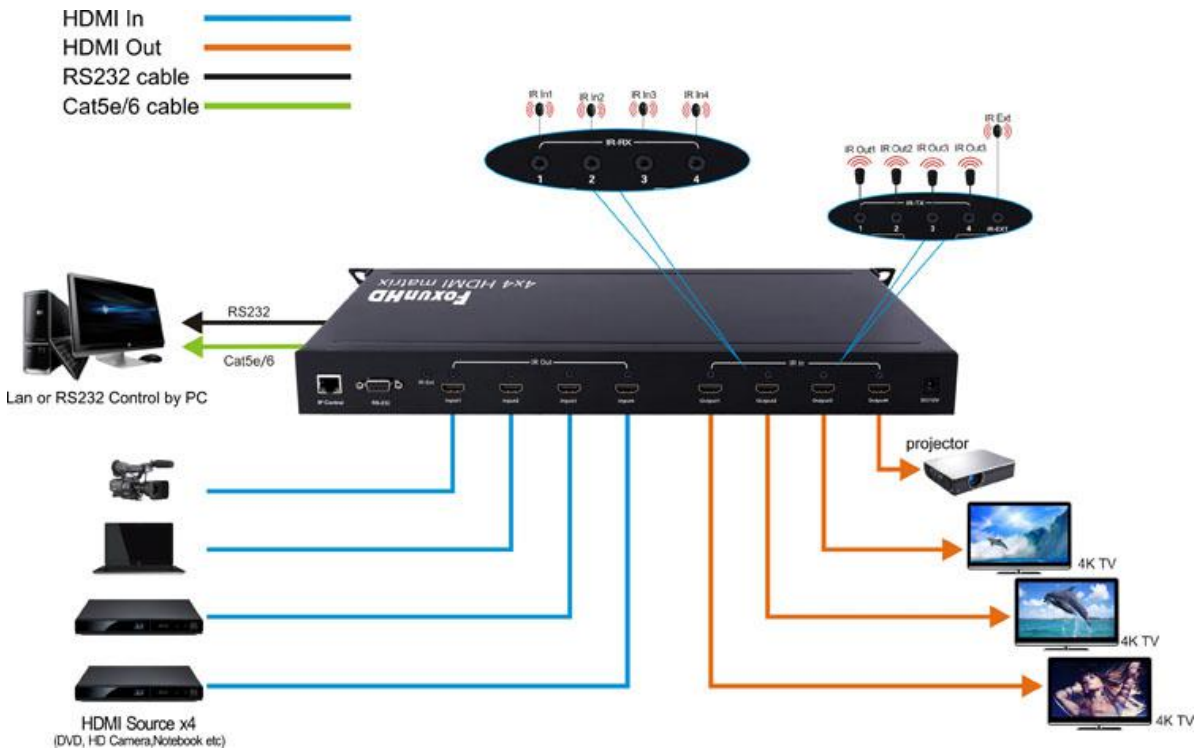


6 CONNECT AND OPERATE

- 1) Connect source devices to input ports of the matrix
- 2) Connect HDMI output ports to TV or other HDMI sink devices
- 3) Optional:connect RS232 cable from PC RS232 port
- 4) Optional:Connect an Ethernet cable from the TCP/IP port on the matrix to a local area network.
- 5) Connect 12V power supply to DC power socket
- 6) Power on the matrix,HDMI sources and displays

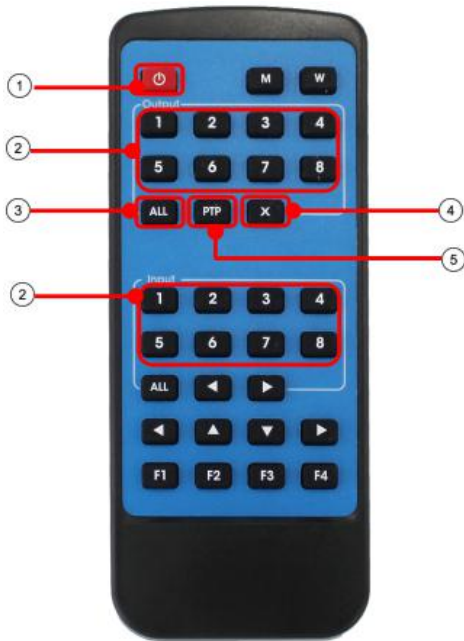
Attention: Insert / Extract cables gently.

7 Typical Application



8 Control

8.1 Local IR remote control.



- ① Standby Mode.
- ② OUTPUT-X select INPUT-Y:
Press OUTPUT-X (X means 1 to 8 of outputs)
Press INPUT-Y (Y means 1 to 8 of inputs)
- ③ All outputs select INPUT-Y:
Press ALL button in zone OUTPUT
Press INPUT-Y button (Y means 1 to 8 of inputs),
then INPUT-Y switched to ALL OUTPUTS.
- ④ Cancel Button: Cancel the switching operation
- ⑤ PTP button: Mirror all inputs and outputs
(Ex. Input 1 to output 1, input 2 to output 2, etc):
Press PTP button in Zone OUTPUT

8.2 RS232 Pin Assignment

Matrix		Remote Control Console	
PIN	Assignment	PIN	Assignment
1	NC	1	NC
2	Tx	2	Rx
3	Rx	3	Tx
4	NC	4	NC
5	GND	5	GND
6	NC	6	NC
7	NC	7	NC
8	NC	8	NC
9	NC	9	NC

Baud Rate:115200bps
 Data Bits:8 bit parity:None Stop Bit:1 bit
 Flow Control:None

8.3 RS 232 Control

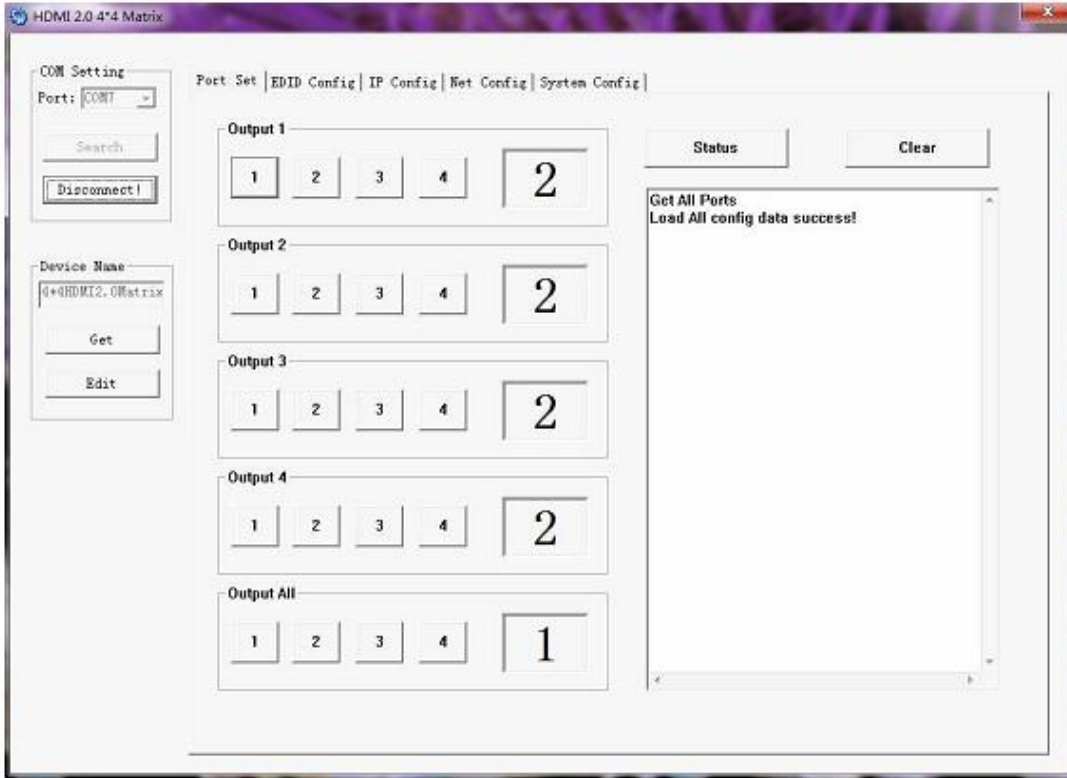
8.3.1 Software control

Connect the 4x4 Matrix to PC with a RS232 cable, open the software on your PC. On the COM Setting session, select the COM port according to your PC and click Connect to get connected.

On this COM setting session, you can also change the Device name, Device name support up to 16

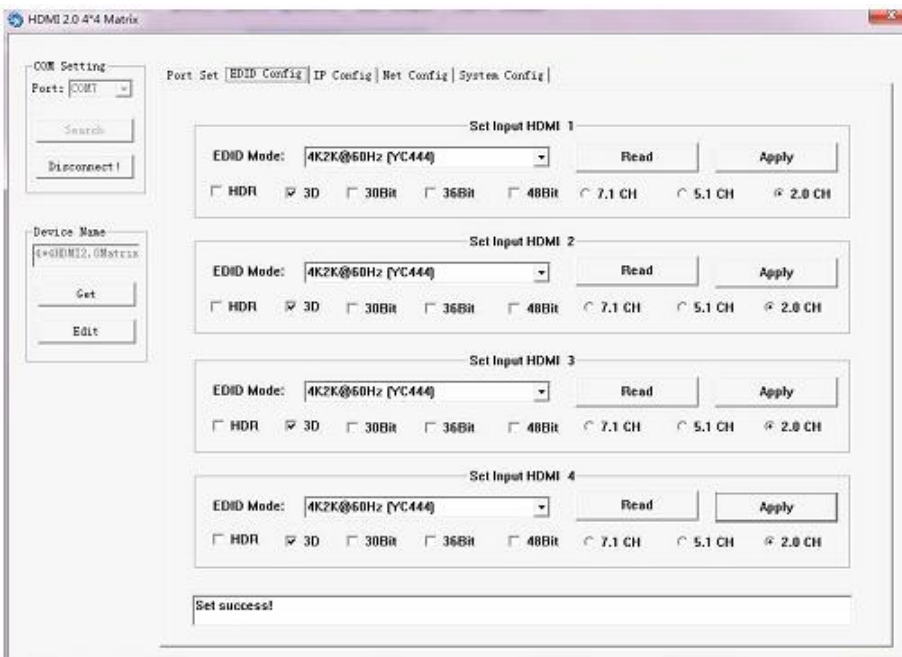
characters. Save or edit your status by clicking the Edit button.

Come to Port Set session to select or switch your input sources for each output, We can read the current status by clicking the “Status” button, or Clear our historical operating record by clicking “Clear” button. The right down blank shows the operating history.



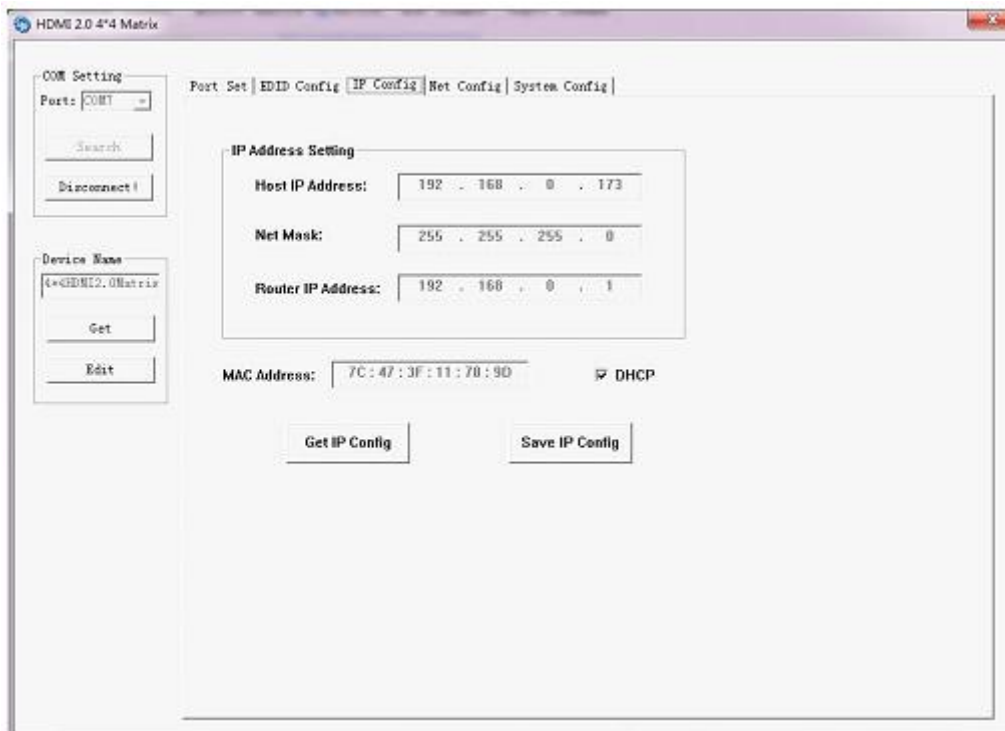
Picture 1

The EDID session helps us to Read and Configure EDID for each input, such as HDR, 3D, Data rates and Audio channel.



Picture 2

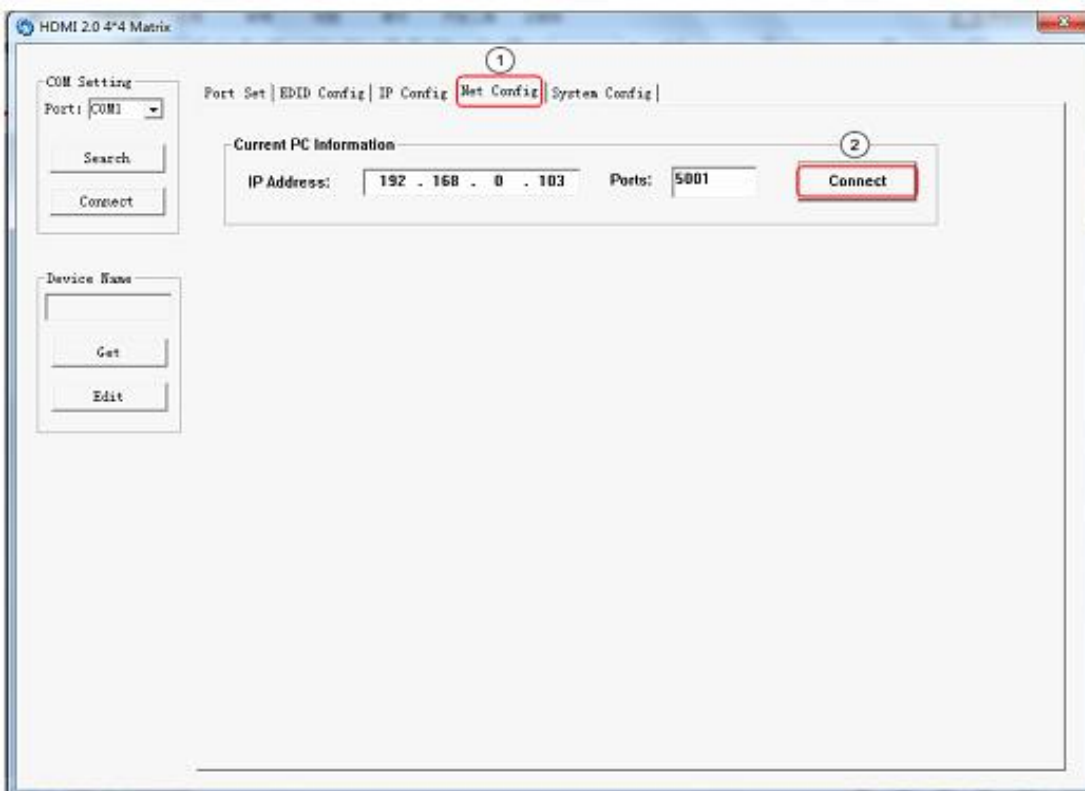
The IP configure session helps to read and configure the IP address and MAC of the Matrix. Check DHCP if you want the router assign an automatic IP for the Matrix.



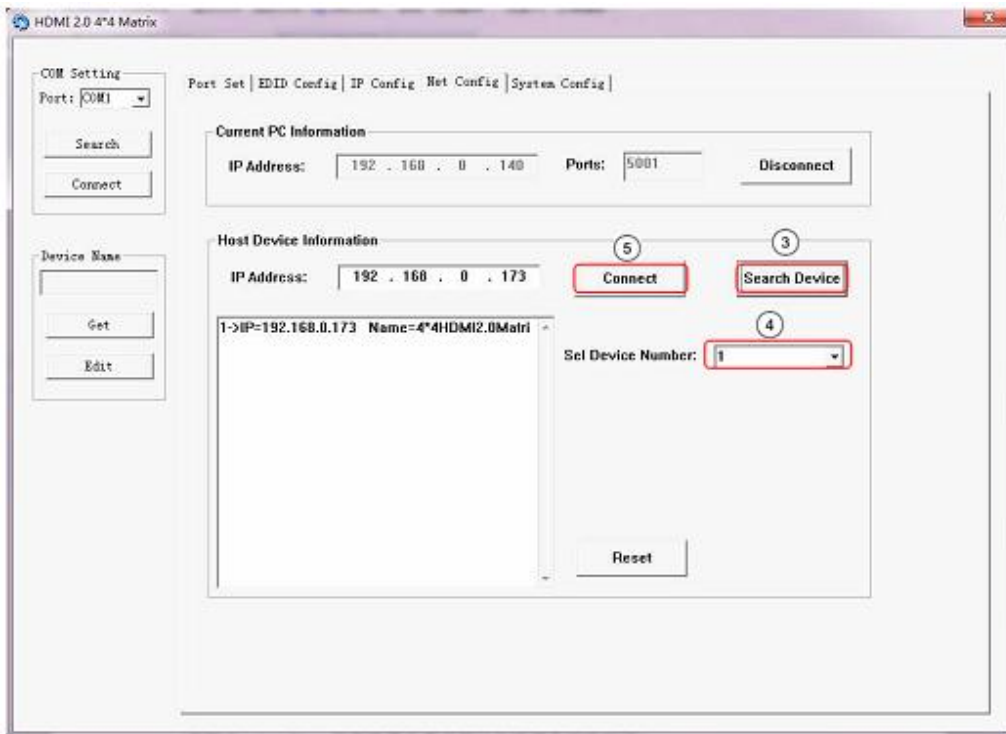
Picture 3

The Net Config session allows us to configure the PC and Matrix in the same LAN with the IP Address and connection.

Click “Net config” → “Connect” → “Search Device” → “Sel Device Number” → “Connect” then you can see the device name, it means connect successfully.

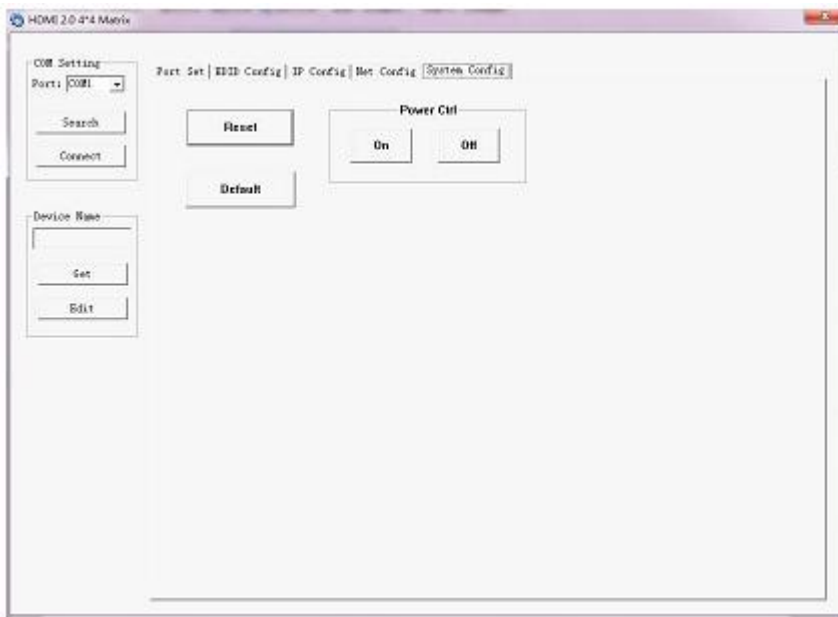


Picture 4



Picture 5

The last session is System Config, which allows power ON/OFF or reset, default the Matrix.



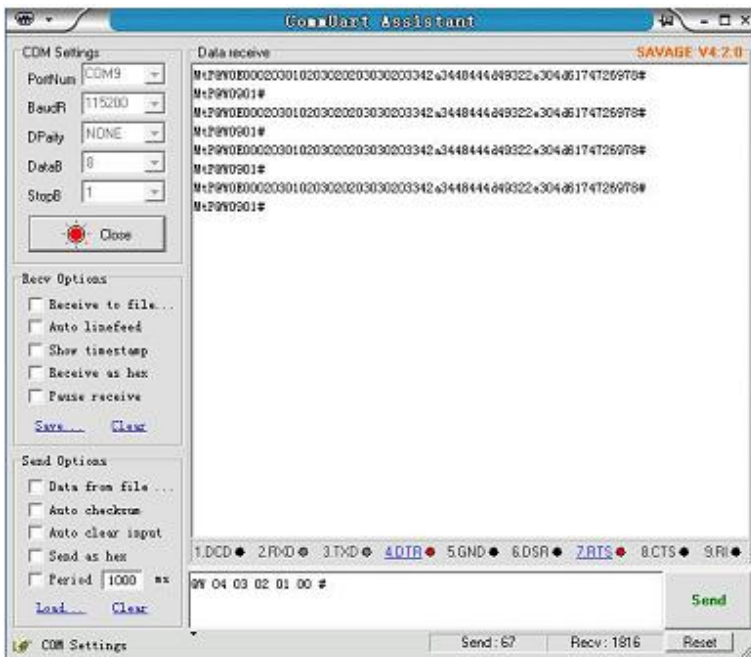
Picture 6

8.4 Command Control

- 1) Open CommUart Assistant.
- 2) Comport setting:

Baud Rate:	115200 bps
Parity:	None
Data Bits:	8 bit
Stop Bits:	1 bit

3) Enter Port Command in Send options.



Picture 7

4) Command

Command	Function	Note
@W 04 00 01 02 03#	PTP Function	Mirror all inputs and outputs (Ex. Input 1 to output 1, input 2 to output 2, etc)
@W 50 #	Reboot	
@W 51 #	Restore Factory Setting	
@W 0F 00 #	Standby	00: Standby Mode 01: Cancel "Standby Mode"

5) Select HDMI input for HDMI output

Command	Description
00	Output1
01	Output2
02	Output3
03	Output4
04	All Output
00	Input1
01	Input2
02	Input3
03	Input4

E.g: @W 00 00 #: Output 1 display Input1



6) EDID Setting

@W XX AA BB #:

Parameter Description:

XX for configuration of “INPUT EDID”

Command	05	06	07	08
Description	Input1	Input2	Input3	Input4

AA for selecting “Video Mode”

Command	00	01	02	03
Description	1080P	4K2K_30	4K2K_60(YC420)	4K2K_60(YC444)

BB for selecting belowing function

Bit7	Bit6	Bit5	Bit4	Bit3	Bit2	Bit1	Bit0
HDR	48Bit	36Bit	30Bit	7.1CH	5.1CH	2CH	3D
1	1	1	1	1	1	1	1
0	0	0	0	0	0	0	0

“1” : choose with the function, “0” : doen’t choose with out the function.

E.g: 11001001: HDR, 48Bit, 7.1CH, 3D

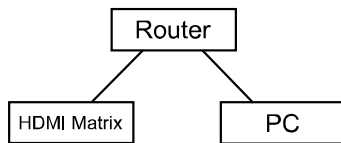
Chang Binary code “11001001” to hexadecimal format “C9”.

E.g: @W 05 03 C9 #

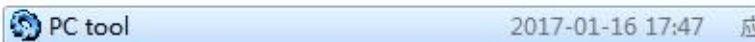
The EDID of input 1 is: 4K2K_60(YC444)、HDR、48Bit、7.1CH、3D.

8.5 Web Control

- 1) Connect the HDMI Matrix and PC to the LAN

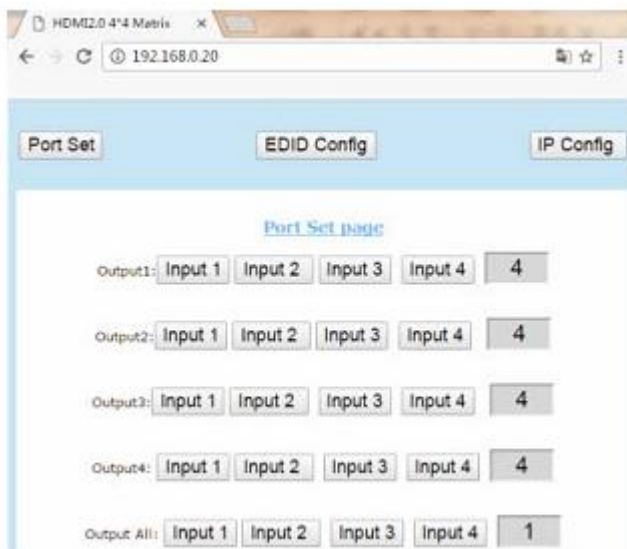


- 2) Open the PC tool (included in the CD).

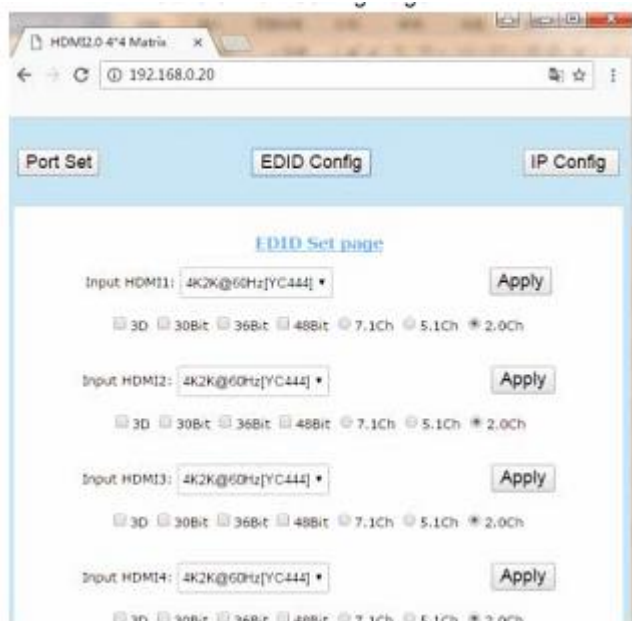


- 3) Search the IP address of HDMI Matrix, please refer to picture 4 & picture 5.

- 4) Open the web browser and enter the IP address you searched, then you can set the function as below pictures:



Picture8



Picture 9



Picture 10

MAINTENANCE

Clean this unit with a soft, dry cloth. Never use alcohol, paint thinner or benzene to clean this unit.

9 PRODUCT SERVICE

- 1) **Damage requiring service:** The unit should be serviced by qualified service personnel if:
 - (a)The DC power supply cord or AC adaptor has been damaged;
 - (b)Objects or liquids have gotten into the unit;
 - (c)The unit has been exposed to rain;

(d)The unit does not operate normally or exhibits a marked change in performance;

(e)The unit has been dropped or the cabinet damaged.

2) **Servicing Personnel:** Do not attempt to service the unit beyond that described in these operating instructions. Refer all other servicing to authorized servicing personnel.

3) **Replacement parts:** When parts need replacing ensure the servicer uses parts specified by the manufacturer or parts that have the same characteristics as the original parts. Unauthorized substitutes may result in fire, electric shock, or other hazards.

4) **Safety check:** After repairs or service, ask the servicer to perform safety checks to confirm that the unit is in proper working condition.

10 WARRANTY

If your product does not work properly because of a defect in materials or workmanship, our Company (referred to as "the warrantor") will , for the length of the period indicated as below,

(Parts(2)Year ,Labor(90) Days) which starts with the date of original purchase ("Limited Warranty period"), at its option either(a) repair your product with new or refurbished parts, or (b) replace it with a new of a refurbished product. The decision to repair or replace will be made by the warrantor.

During the "Labor" Limited Warranty period there will be no charge for labor.

During the "Parts" warranty period, there will be no charge for parts. You must mail-in your product during the warranty period. This Limited Warranty is extended only to the original purchaser and only covers product purchased as new. A purchase receipt or other proof of original purchase date is required for Limited Warranty service.

LIMITED WARRANTY LIMITS AND EXCLUSIONS

1) This Limited Warranty ONLY COVERS failures due to defects in materials or workmanship, and DOES NOT COVER normal wear and tear or cosmetic damage. The Limited Warranty ALSO DOES NOT COVER damages which occurred in shipment, or failures which are caused by products not supplied by warrantor,or failures which result from accidents,misuse,abuse,neglect, mishandling, misapplication, alteration, faulty installation, set-up adjustments, misadjustment of consumer controls, improper maintenance, power line surge, lightning damage, modification, or service by anyone other than a Factory Service center or other Authorized Servicer, or damage that is attributable to acts of God.

2) THERE ARE NO EXPRESS WARRANTIES EXCEPT AS LISTED UNDER "LIMITED WARRANTY COVERAGE". THE WARRANTOR IS NOT LIABLE FOR INCIDENTAL OR CONSEQUENTIAL DAMAGES RESULTING FROM THE USE OF THIS PRODUCT, OR ARISING OUT OF ANY BREACH OF THIS WARRANTY. (As examples, this excludes damages for lost time, cost of having someone remove or re-install an installed unit if applicable, travel to and from the service, loss of or damage to media or images, data or other recorded content. The items listed are not exclusive, but are for illustration only. PARTS AND SERVICE, WHICH ARE NOT COVERED BY THIS LIMITED WARRANTY, ARE YOUR RESPONSIBILITY.