

FX-KVM02

DVI KVM Extender Over 70m Single Cat5e/6 with IR Incorporates HDBaseT Technology

Dear Customer

Thank you for purchasing this product. For optimum performance and safety, please read these instructions carefully before connecting, operating or adjusting this product. Please keep this manual for future reference.

ABLE OF CONTENTS

Feature

Package Contents

Panel Descriptions

Connecting and Operating

Typical Application

Product Service

Warranty

Feature

- Use single UTP cable (CAT5e/6, should follow EIA/TIA 568B standard) to substitute DVI cable to extend longer transmission distance, transmitter up to 70m.
- Support 8KV ESD protection.
- Support TMDS equalization and enhancement.
- Support EDID pass through via LAN, for best compliance with most display devices.
- Support Infrared control signal pass through via LAN.
- By transmitting keyboard and mouse data via LAN, it is easy to control PC remotely.
- With customized remote button, it is easy to turn on PC remotely.
- Support 1920x1080@60Hz.

NOTICE

Our company reserve the right to make changes in the hardware, packaging and any accompanying documentation without prior written notice.

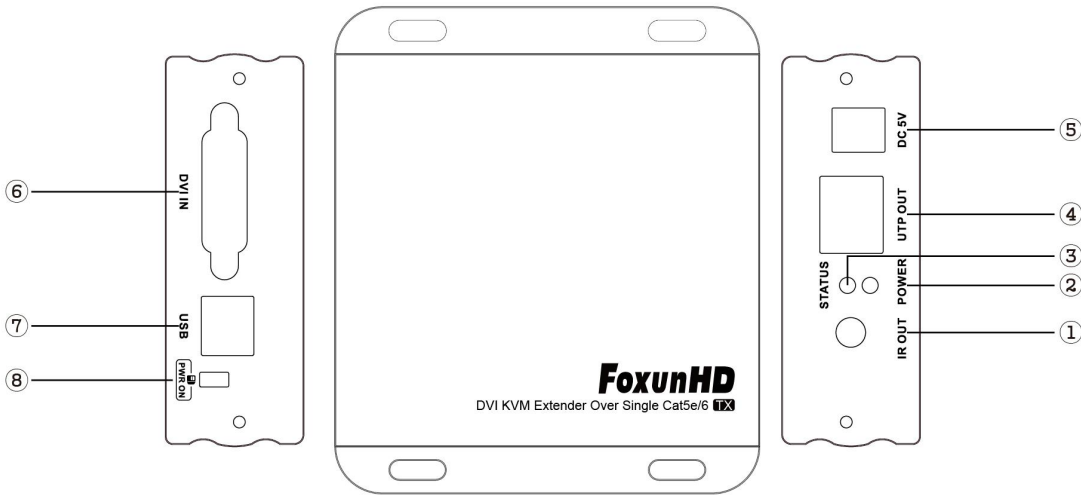
Note: Specifications are subject to change without notice. Mass and dimensions are approximate.

PACKING CONTENTS

- 1) Transmitter x1
- 2) Receiver x1
- 3) IR transmitter x1
- 4) IR receiver x1
- 5) DC5V Power Supply x2
- 6) User manual x1

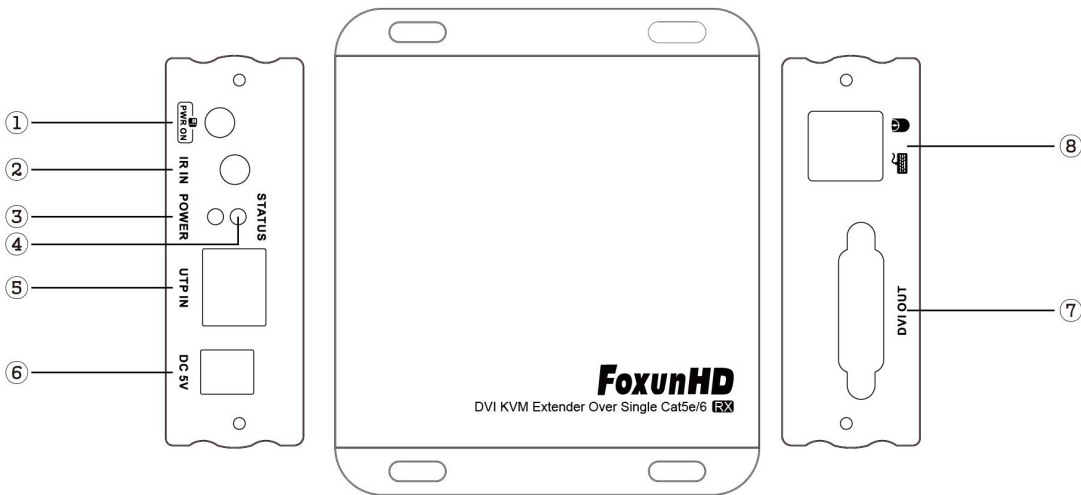
Notes: Please confirm if the product and the accessories and all in duded, if not please contact with the dealers.

PANEL DESCRIPTION**Transmitter Panel**



- 1. IR transmitter port
- 2. LED indicators of power
- 3. Connection status
- 4. UTP cable port
- 5. DC 5V input
- 6. DVI input
- 7. USB cable in
- 8. Customized button output pins

Receiver Panel



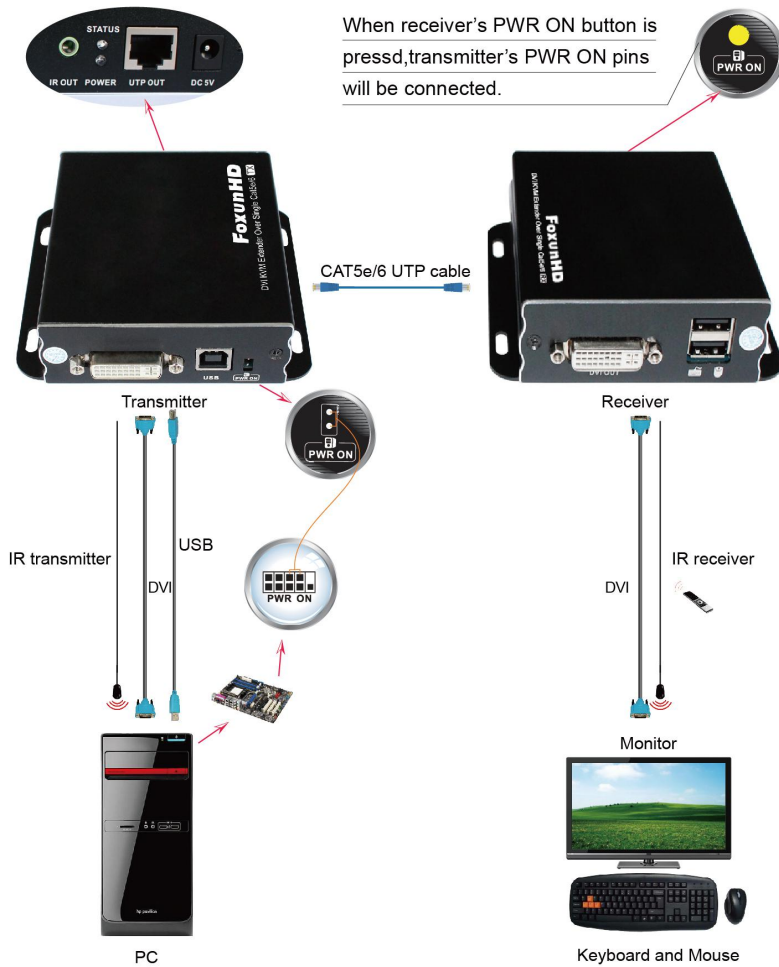
- 1. Customized button
- 2. IR receiver port
- 3. LED indicators of power
- 4. Connection status
- 5. UTP cable port
- 6. DC 5V input
- 7. DVI output
- 8. Keyboard and mouse input

CONNECT AND OPERATE

- 1) Connect the DVI source (Such as PC) to DVI Transmitter.
- 2) Connect cat5e/6 cables to both UTP output port of the transmitter and UTP input port of the Receiver.
- 3) Connect the Receiver to the Monitor, keyboard, mouse.
- 4) Connect 5VDC power supplies to both Transmitter unit and Receiver unit.

Typical Application

Wiring Diagram



Attention: 1) Insert/Extract cable gently.

2) Please don't insert into or pull out HDMI Cable when power on. please connect Cable only when power is off.

MAINTENANCE

Clean this unit with a soft, dry cloth. Never use alcohol, paint thinner or benzene to clean this unit.

PRODUCT SERVICE

5) **Damage requiring service:** The unit should be serviced by qualified service personnel if:

- (a)The DC power supply cord or AC adaptor has been damaged;
- (b)Objects or liquids have gotten into the unit;
- (c)The unit has been exposed to rain;
- (d)The unit does not operate normally or exhibits a marked change in performance;

(e)The unit has been dropped or the cabinet damaged.

6) **Servicing Personnel:** Do not attempt to service the unit beyond that described in these operating instructions. Refer all other servicing to authorized servicing personnel.

3) **Replacement parts:** When parts need replacing ensure the servicer uses parts specified by the manufacturer or parts that have the same characteristics as the original parts. Unauthorized substitutes may result in fire, electric shock, or other hazards.

4) **Safety check:** After repairs or service, ask the servicer to perform safety checks to confirm that the unit is in proper working condition.

WARRANTY

If your product does not work properly because of a defect in materials or workmanship, our Company (referred to as "the warrantor") will , for the length of the period indicated as below,

(Parts(2)Year ,Labor(90) Days) which starts with the date of original purchase ("Limited Warranty period"), at its option either(a) repair your product with new or refurbished parts, or (b) replace it with a new of a refurbished product. The decision to repair or replace will be made by the warrantor.

During the "Labor" Limited Warranty period there will be no charge for labor.

During the "Parts" warranty period, there will be no charge for parts. You must mail-in your product during the warranty period. This Limited Warranty is extended only to the original purchaser and only covers product purchased as new. A purchase receipt or other proof of original purchase date is required for Limited Warranty service.

LIMITED WARRANTY LIMITS AND EXCLUSIONS

1) This Limited Warranty ONLY COVERS failures due to defects in materials or workmanship, and DOES NOT COVER normal wear and tear or cosmetic damage. The Limited Warranty ALSO DOES NOT COVER damages which occurred in shipment, or failures which are caused by products not supplied by warrantor,or failures which result from accidents,misuse,abuse,neglect, mishandling, misapplication, alteration, faulty installation, set-up adjustments, misadjustment of consumer controls, improper maintenance, power line surge, lightning damage, modification, or service by anyone other than a Factory Service center or other Authorized Servicer, or damage that is attributable to acts of God.

2) THERE ARE NO EXPRESS WARRANTIES EXCEPT AS LISTED UNDER "LIMITED WARRANTY

COVERAGE". THE WARRANTOR IS NOT LIABLE FOR INCIDENTAL OR CONSEQUENTIAL DAMAGES RESULTING FROM THE USE OF THIS PRODUCT, OR ARISING OUT OF ANY BREACH OF THIS WARRANTY. (As examples, this excludes damages for lost time, cost of having someone remove or re-install an installed unit if applicable, travel to and from the service, loss of or damage to media or images, data or other recorded content. The items listed are not exclusive, but are for illustration only. PARTS AND SERVICE, WHICH ARE NOT COVERED BY THIS LIMITED WARRANTY, ARE YOUR RESPONSIBILITY.