

FX-EP22

120m HDMI extender over IP with POE,DIP switch

Dear Customer

Thank you for purchasing this product. For optimum performance and safety, please read these instructions carefully before connecting, operating or adjusting this product. Please keep this manual for future reference.

ABLE OF CONTENTS

Feature

Specifications

Package Contents

Panel Descriptions

Connecting and Operating

Typical Application

Product Service

Warranty

Feature

- Flexible and scalable HDMI 1080p High Quality Video Broadcasting with Gigabit Ethernet LAN.
- Extends 1080p HDMI signals up to 120m over a single UTP Cat5e/6 cable.
- Multicasting and broadcasting architecture, adding more displays without adding LAN bandwidth loading.
- Support Point-to-Point, Point-to-Many and Many-to-Many network configuration.
- Dual power input: 802.3af compliant POE & DC5V.
- With POE function , no need power adapter for TX & RX when connecting with POE Switch.
- Up to 16 transmitters and more than 200 receivers in a single system.
- With IR Control function ,it allows you control back the source at the end of destination
- Built-in DIP switch to change Group ID and with multiple remote control ways.
- Support IGMP v.1 &v.2 address
- Support cascading Ethernet Switches up to 3 layers
- DC 5V/1A x2 PCS Power Supply.
- Power Consumption : TX:4watts;RX:4watts
- Dimension (L×W×H):106.5x93.5x24.6 mm
- Net Weight:Receiver:255g,Transmitter:255g

NOTICE

Our company reserve the right to make changes in the hardware, packaging and any accompanying documentation without prior written notice.

SPECIFICATIONS

Operating Temperature Range	-5 to +65°C (+23 to +149°F)
Operating Humidity Range	5 to 90%RH (No Condensation)
Support Video Format	DTV/HDTV:480i/576i/480P/576P/720P/1080i/1080P
Output Video	HDMI, HDCP
Transmission Distance	1080P @60Hz120m over single CAT5E/6 /24AWG/Solid
Power consumption	5V/1A DC , 802.3af POE Power consumption: 4W
Dimension (L×W×H)	L106.5xW93.5xH24.6mm
IR frequency range	38-56kHz
Net Weight	Receiver:255g,Transmitter:255g

Note:	TX & RX	Default IP address:192.168.168.55;MAC address:00:0b:78:00:60:01 Group IP address: 239.168.168.xx, (xx is the value of bits[2:0]) Default IP address:192.168.168.56;MAC address:00:0b:78:00:60:02
--------------	---------	---

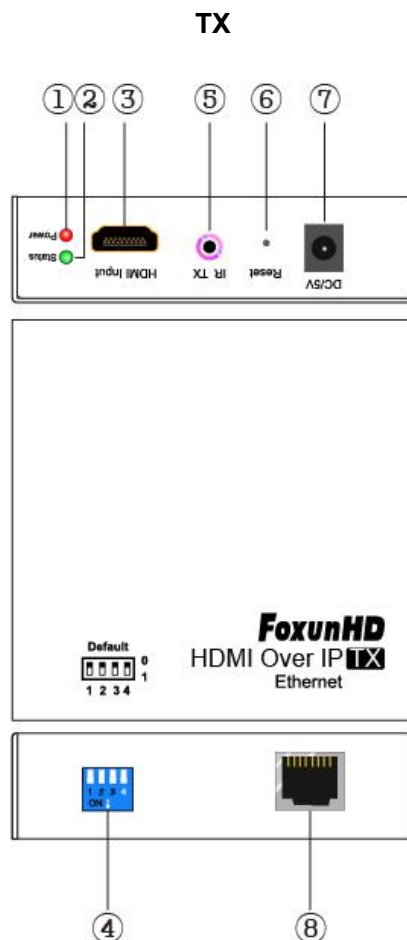
Specifications are subject to change without notice. Mass and dimensions are approximate.

PACKING CONTENTS

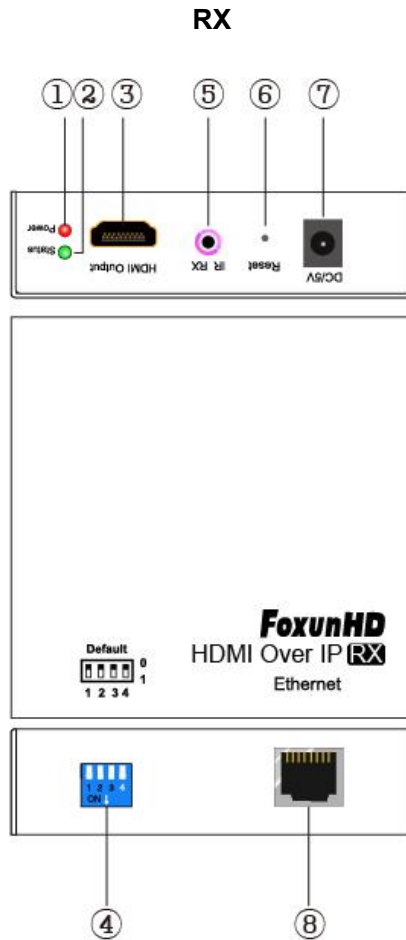
- 1) Main Unit. Transmitter & Receiver HDMI Extender
- 2) Power adapter DC 5V 1Ax2PCS
- 3) IR-TX cable&IR-RX cable
- 4) Operating Instructions

Notes: Please confirm if the product and the accessories and all in duded, if not please contact with the dealers.

PANEL DESCRIPTION



- 1) Indicator of power input
- 2) Status of signal connection
- 3) HDMI input
- 4) DIP switch
- 5) IR-TX port
- 6) Reset button
- 7) Power input port
- 8) Ethernet port



- 1) Indicator of power input
- 2) Status of signal connection
- 3) HDMI output
- 4) DIP switch
- 5) IR-RX port
- 6) Reset button
- 7) Power input port

8) Ethernet port

CONNECT AND OPERATE**1) HDMI Over IP One source to one display function**

(1) Connect one HDMI Cable between the HDMI output port of source device and the HDMI input port of Transmitter unit

(2) Connect one HDMI Cable between the HDMI input port of display and the HDMI output port of Receiver unit.

(3) Connect one UTP Cat5e or better cables between the RJ45 port of Transmitter unit and RJ45 port of Receiver unit.

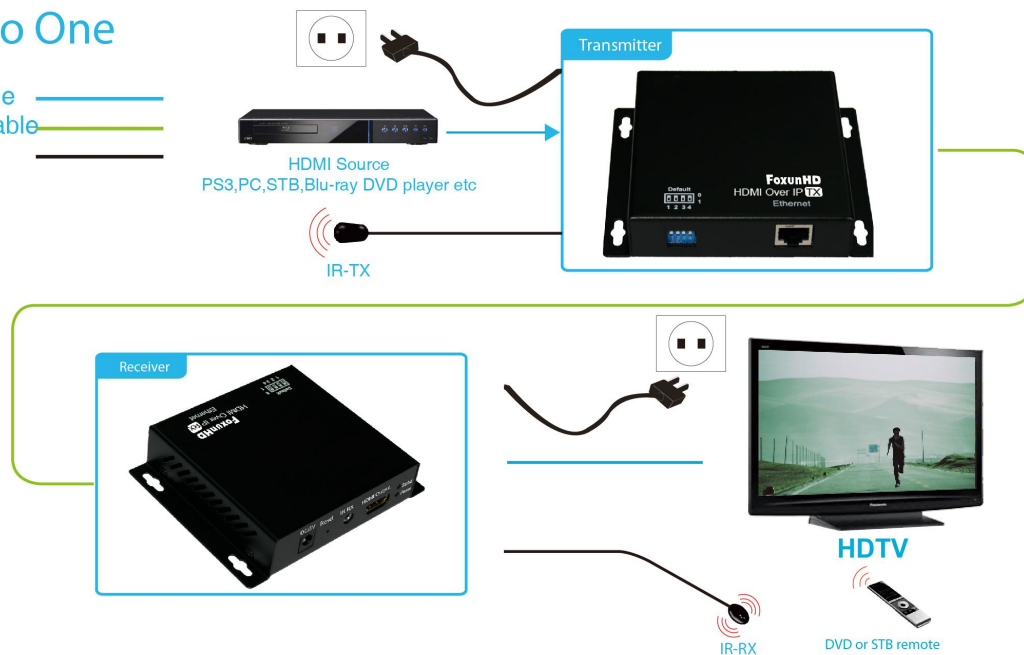
(4) Connect 5V DC power supplies to both Transmitter unit and Receiver unit.

(5) Power on the output device first and the source second.

Important: Please make sure power on the transmitter and receiver first , then power on the source !

One to One

HDMI cable
Cat5e/6 cable
IR cable

**2) HDMI Over IP One source to more displays function**

(1) Connect one HDMI Cable between the HDMI output port of source device and the HDMI input port of Transmitter unit

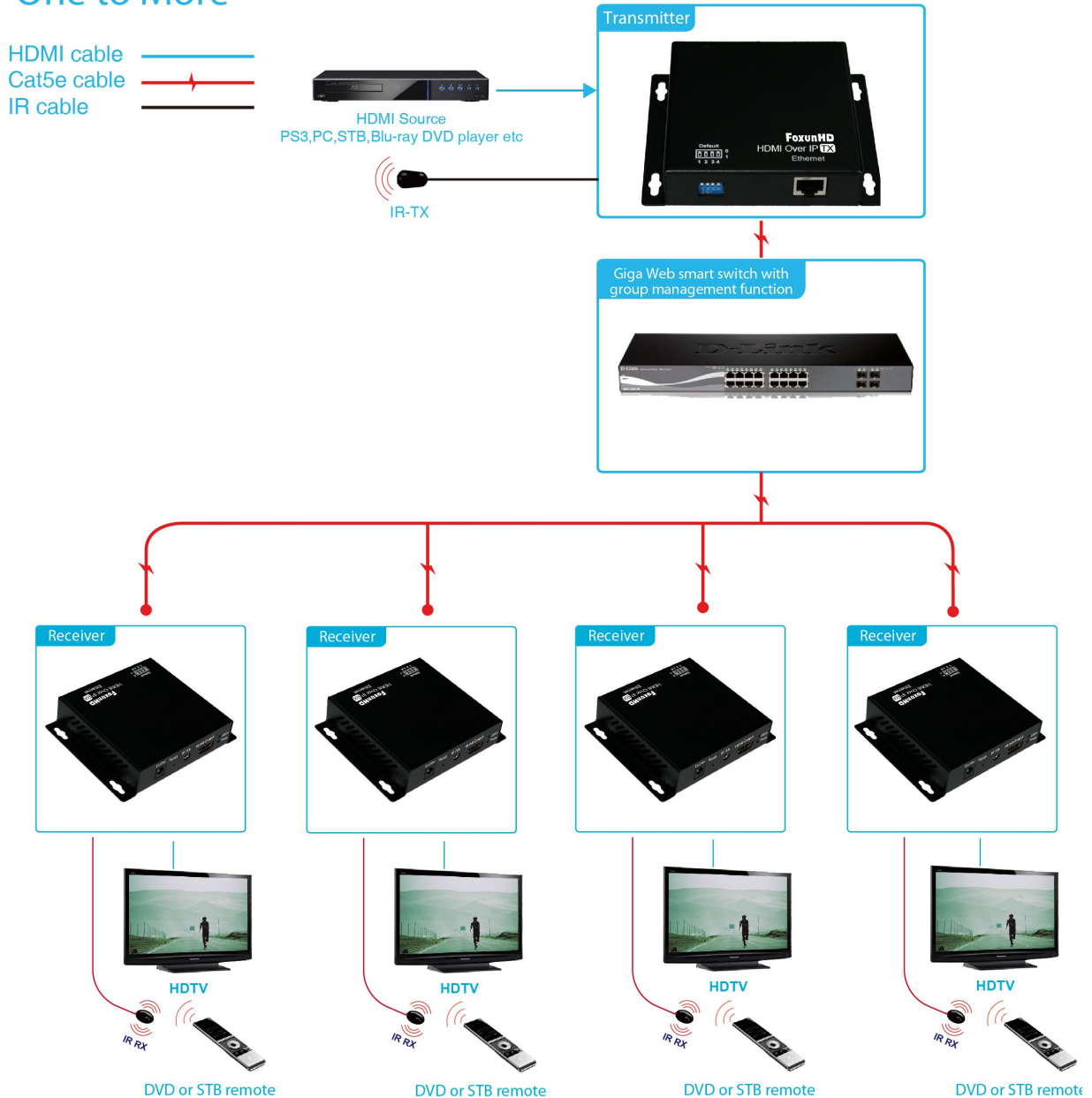
(2) Connect one CAT5e or better cable between the RJ45 port of transmitter and input port of Gigabit

Ethernet switch hub.

- (3) Connect one CAT5e or better cable between the output port of each Gigabit Ethernet switch hub and RJ45 port of Receiver unit.
- (4) Power on the output device first and then the source device.
- (5) Use DIP switch has set up on the transmitter side (Group ID:0001) for each receiver. (Group ID:0001)

Important: Please make sure power on the transmitter and receiver first , then power on the source !




One to More

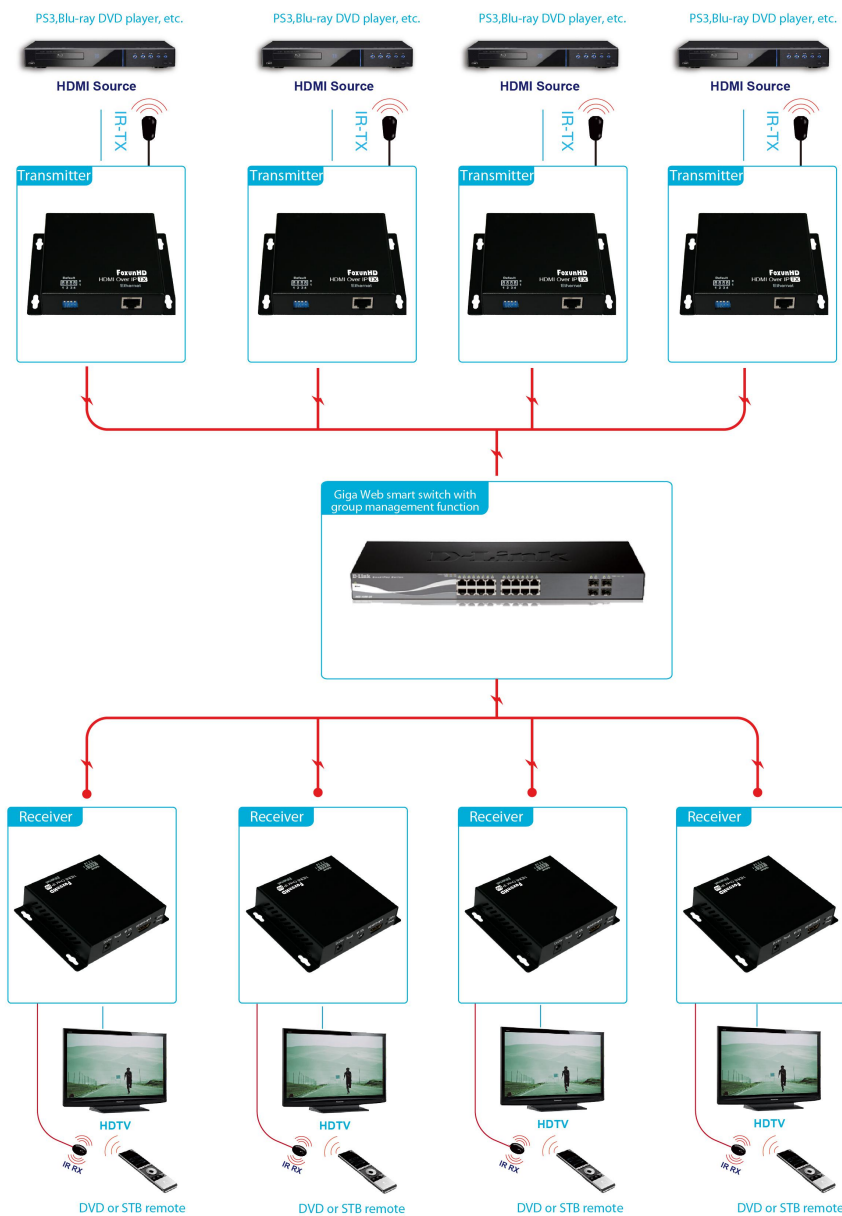


3) Many Sources to Many Displays Function

- (1) Connect one HDMI Cable between the HDMI output port of source device and the HDMI input port of Transmitter unit.

- (2) Connect one HDMI Cable between the HDMI input port of display and the HDMI output port of Receiver unit.
- (3) Connect one CAT5e or better cable between the RJ45 of each Transmitter unit and RJ45 port of Gigabit Ethernet switch hub.
- (4) Connect one CAT5e or better cable between each RJ45 port of Gigabit Ethernet switch hub to RJ45 port of Receiver unit. User can select source channel by setting up dip switch on each transmitter unit. And select display source for Receiver units via one remote control.
- (5) Use DIP switch to select sources .

HDMI cable 
 Cat5e cable 
 IR cable 



Important: Please make sure power on the transmitter and receiver first , then power on the source !

Typical Application

Attention: 1) Insert/Extract cable gently.

2) Please don't insert into or pull out HDMI Cable when power on. please connect Cable only when power is off.

MAINTENANCE

Clean this unit with a soft, dry cloth. Never use alcohol, paint thinner or benzene to clean this unit.

PRODUCT SERVICE

1) **Damage requiring service:** The unit should be serviced by qualified service personnel if:

- (a)The DC power supply cord or AC adaptor has been damaged;
- (b)Objects or liquids have gotten into the unit;
- (c)The unit has been exposed to rain;
- (d)The unit does not operate normally or exhibits a marked change in performance;
- (e)The unit has been dropped or the cabinet damaged.

2) **Servicing Personnel:** Do not attempt to service the unit beyond that described in these operating instructions. Refer all other servicing to authorized servicing personnel.

3) **Replacement parts:** When parts need replacing ensure the servicer uses parts specified by the manufacturer or parts that have the same characteristics as the original parts. Unauthorized substitutes may result in fire, electric shock, or other hazards.

4) **Safety check:** After repairs or service, ask the servicer to perform safety checks to confirm that the unit is in proper working condition.

WARRANTY

If your product does not work properly because of a defect in materials or workmanship, our Company (referred to as "the warrantor") will , for the length of the period indicated as below,

(Parts(2)Year ,Labor(90) Days) which starts with the date of original purchase ("Limited Warranty period"),

at its option either(a) repair your product with new or refurbished parts, or (b) replace it with a new or a refurbished product. The decision to repair or replace will be made by the warrantor.

During the "Labor" Limited Warranty period there will be no charge for labor.

During the "Parts" warranty period, there will be no charge for parts. You must mail-in your product during the warranty period. This Limited Warranty is extended only to the original purchaser and only covers product purchased as new. A purchase receipt or other proof of original purchase date is required for Limited Warranty service.

LIMITED WARRANTY LIMITS AND EXCLUSIONS

1) This Limited Warranty ONLY COVERS failures due to defects in materials or workmanship, and DOES NOT COVER normal wear and tear or cosmetic damage. The Limited Warranty ALSO DOES NOT COVER damages which occurred in shipment, or failures which are caused by products not supplied by warrantor, or failures which result from accidents, misuse, abuse, neglect, mishandling, misapplication, alteration, faulty installation, set-up adjustments, misadjustment of consumer controls, improper maintenance, power line surge, lightning damage, modification, or service by anyone other than a Factory Service center or other Authorized Servicer, or damage that is attributable to acts of God.

2) THERE ARE NO EXPRESS WARRANTIES EXCEPT AS LISTED UNDER "LIMITED WARRANTY COVERAGE". THE WARRANTOR IS NOT LIABLE FOR INCIDENTAL OR CONSEQUENTIAL DAMAGES RESULTING FROM THE USE OF THIS PRODUCT, OR ARISING OUT OF ANY BREACH OF THIS WARRANTY. (As examples, this excludes damages for lost time, cost of having someone remove or re-install an installed unit if applicable, travel to and from the service, loss of or damage to media or images, data or other recorded content. The items listed are not exclusive, but are for illustration only.

PARTS AND SERVICE, WHICH ARE NOT COVERED BY THIS LIMITED WARRANTY, ARE YOUR RESPONSIBILITY.