

FX-MX06

4K HDMI Matrix 4x4, HDCP 2.2

Dear Customer

Thank you for purchasing this product. For optimum performance and safety, please read these instructions carefully before connecting, operating or adjusting this product. Please keep this manual for future reference.

ABLE OF CONTENTS

Feature

Introduction

Specifications

Package Contents

Panel Descriptions

Connecting and Operating

Typical Application

Product Service

Warranty

Feature











- HDMI 2.0 version (Support HDMI2.0 4K50/60Hz YUV420).
- Support high definition resolutions 4K@60Hz, 4K@30Hz, 1080P, 1080i, 720P and standard video format.
- Support 3D.
- HDCP 2.2/1.4 compliant.
- 4xHDMI Input, 4xHDMI output with SPDIF Audio.
- Allows up to four 4 source devices to be independently switched to 4 HDMI monitors, HDTVs, or projectors.
- The 4 outputs could show the same or different source at the same time no matter the source is HDCP or not.
- Support Panel Button, Local IR, RS232 Control, IP Control Via Telnet.
- 1U rack design, easy installment.
- Power consumption:30watts
- Dimension (L×W×H):440x256x42mm
- Net Weight:2.1kg.

NOTICE

Our company reserve the right to make changes in the hardware, packaging and any accompanying documentation without prior written notice.

Warning

To reduce the risk of fire, electric shock or product damage:

- | | |
|---|--|
|  <p>1. Do not expose this apparatus to rain, moisture, dripping or splashing and that no objects filled with liquids, such as vases, shall be placed on the apparatus.</p> |  <p>6. Clean this apparatus only with dry cloth.</p> |
|  <p>2. Do not install or place this unit in a bookcase, built-in cabinet or in another confined space. Ensure the unit is well ventilated.</p> |  <p>7. Unplug this apparatus during lightning storms or when unused for long periods of time.</p> |
|  <p>3. To prevent risk of electric shock or fire hazard due to overheating, do not obstruct the unit's ventilation openings with newspapers, tablecloths, curtains, and similar items.</p> |  <p>8. Protect the power cord from being walked on or pinched particularly at plugs.</p> |
|  <p>4. Do not install near any heat sources such as radiators, heat registers, stoves, or other apparatus (including amplifiers) that produce heat.</p> |  <p>9. Only use attachments / accessories specified by the manufacturer.</p> |
|  <p>5. Do not place sources of naked flames, such as lighted candles, on the unit.</p> |  <p>10. Refer all servicing to qualified service personnel.</p> |

INTRODUCTION

It is 4K HDMI Matrix 4x4, supports HDCP2.2. It offers HD video solution for super market, shopping mall; HDTV, STB, DVD and projector factory; data control center; conference rooms; education and training; luxurious house; home theaters etc.

SPECIFICATIONS

Operating Temperature Range	-5 to +65°C(+23 to +149°F)
Operating Humidity Range	5 to 90 % RH (no condensation)
Input Video Signal	0.5-1.0 volts p-p
Input DDC Signal	5 volts p-p (TTL)
Signaling Rate	3.0Gbit/s
Video Format Supported	4K@60Hz/4k@30Hz/1080P/1080i/720P/576P/480P/576i/480i
HDCP Compliant	HDCP2.2 and HDCP1.4
Output Video	HDMI2.0 and HDMI 1.4
Audio Format Supported	DTS-HD、Dolby trueHD
Maximum Transmission Distance	<15m
Power Consumption	30watts (Max.)

Dimensions	L440xW256xH42mm/ L17.3"xW10"xH1.65"
Mass (Main Unit)	2.1kg

Note: Specifications are subject to change without notice. Mass and dimensions are approximate.

PACKING CONTENTS

- ① Main unit. (FX-MX06)
- ② 12V3A DC Power Supply.
- ③ 1x Remote controller.
- ④ 1x IR_RX (IR receiver) extension cable.
- ⑤ Operating Instructions.
- ⑥ 2x Mounting Ear.

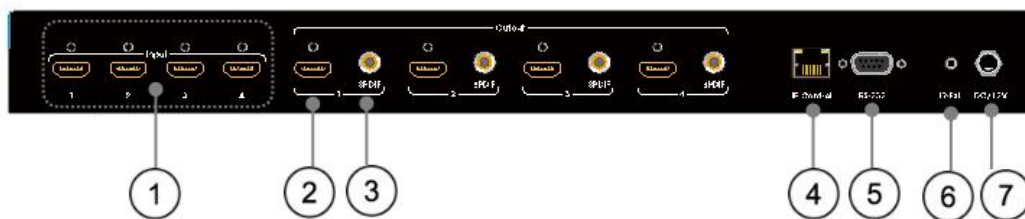
Notes: Please confirm if the product and the accessories and all in duded, if not please contact with the dealers.

PANEL DESCRIPTION

Front Panel



Rear Panel




- ① HDMI input
- ② HDMI output
- ③ SPDIF Audio output.
- ④ IP control
- ⑤ RS232 for control.
- ⑥ For IR external receiver cable.
- ⑦ DC power input.

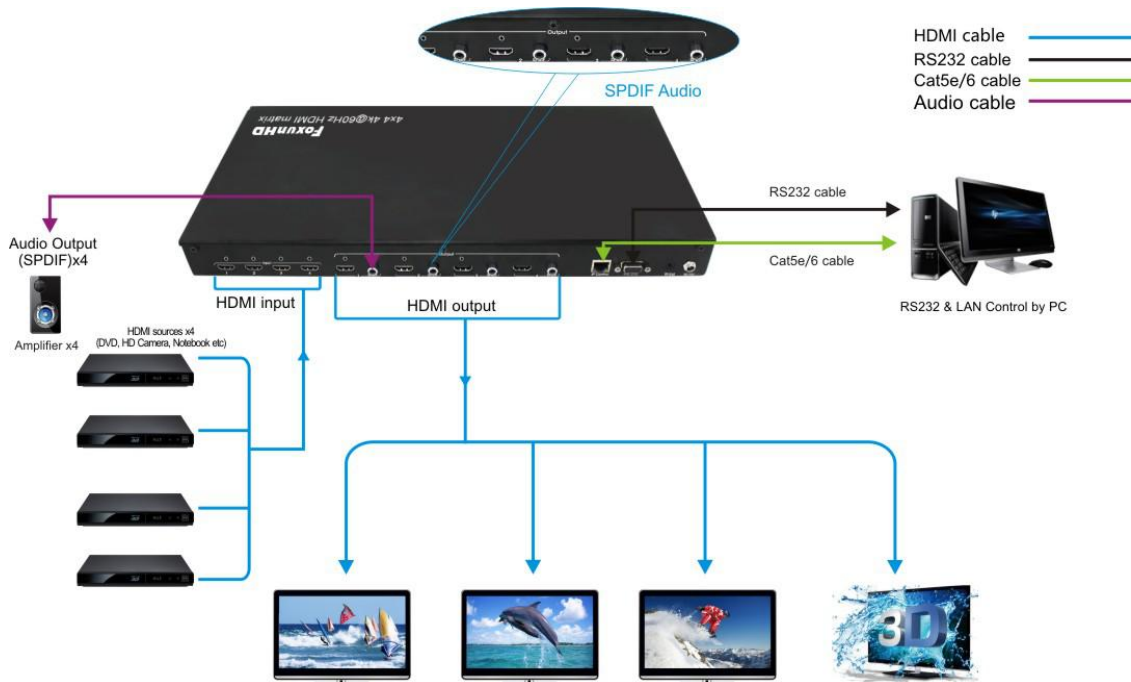
CONNECT AND OPERATE

- 1) Connect the HDMI input sources (such as HD-DVD, PS3, STB etc) into FX-MX06.
- 2) Connect the HDMI outputs (such as HD-LCD, HD-DLP) into FX-MX06.

- 3) Power on the input source you want to show.
- 4) Connect the power supply into FX-MX06 and turn on the display you want to watch.
- 5) Use remote or push the button to choose input source.

 **Attention:** Insert / Extract cables gently.

Typical Application



MAINTENANCE

Clean this unit with a soft, dry cloth. Never use alcohol, paint thinner or benzene to clean this unit.

Operation:

1. Front panel control.

The FX-MX06 front panel to select inputs to the various outputs.

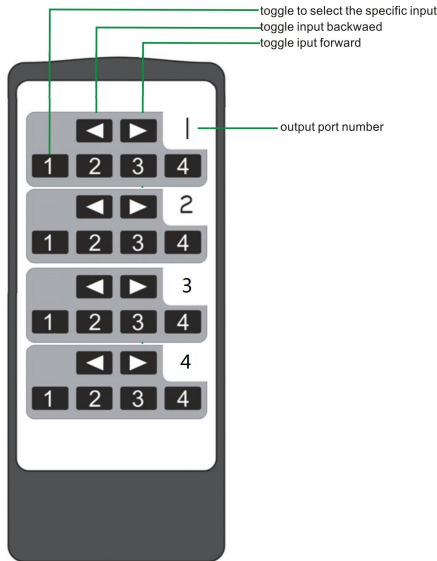


Change source for output port:

First, pressing output number button to choose which output port need to change the source (the input digit above the output port number on LCD start to be flickering).

Second, pressing input number will change the source of the output port to the selected input.

2. Local IR remote control.



User can control the HDMI route of the matrix by using the IR remote. There are two group key pads for two output ports. For each output port source selection, there are 4 number keys and two arrow keys. Press number keys to select specific input port. Left arrow button to backward the input port, and right arrow to forward input port.

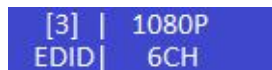
3. IR extender control.



User can use the IR receiver cable to change the IR receiver position. If controlling the FX-MX06 through the 1/8" (3.5 mm) input jack on the rear panel, connect the IR cable directly to the matrix rear IR receiver extension sockets.

4. EDID setting.

Pressing and holding input number button for 3 seconds to recall the display on front LCD panel for EDID setting of this input port.



For example, pressing and holding input number button 3 for 3 seconds will recall the LCD to show the current EDID setting on input port 3:

Clicking the button In3 will show the next EDID:



When pressing and holding button In3 for 3 seconds will select the EDID shown on LCD panel, and the LCD panel will show:



When want to copy EDID from out1 to input 3, pressing and holding In3 to recall the display of EDID setting for input3, click button In3 for 13 times, LCD panel will show:




When show the content on LCD, pressing and holding In3 for 3 seconds, 4x4 matrix will try to read EDID data from output1 and save it to input3

Below is the list for EDID options.

- 1: 1080P_2CH(PCM)
- 2: 1080P_audio5.1
- 3: 1080P_audio7.1
- 4: 1080P_3D_2CH(PCM)
- 5: 1080P_3D_audio5.1
- 6: 1080P_3D_audio7.1
- 7: 4K30Hz_3D_2CH(PCM)
- 8: 4K30Hz_3D_audio5.1
- 9: 4K30Hz_3D_audio7.1
- 10: 4K60Hz(Y420)_3D_2CH(PCM)
- 11: 4K60Hz(Y420)_3D_audio5.1
- 12: 4K60Hz(Y420)_3D_audio7.1
- USER EDID 1
- USER EDID 2
- USER EDID 3
- EDID from output1
- EDID from output2
- EDID from output3
- EDID from output4

5. IP control module information shown on LCD panel.

Pressing In3 and In4 simultaneously for 3 seconds, IP setting information will be shown on front LCD panel.



HOST IP:
192.168.001.239

Other IP setting information will be shown automatically after every 3 seconds.

6. Turn on or turn off DHCP mode.

Pressing In1 and In3 simultaneously for 3 seconds to toggle the DHCP mode.

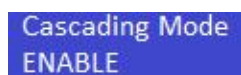


DHCP ON DHCP OFF

7. Turn on or turn off cascading mode.

When in cascading mode, matrix will not read EDID data from sink device (TV) or hot plug status but always output the signal to the sink device without doing handshake. This mode is only when some handshake problem happened. When there is this kind of problem happened, try this mode to solve the problem.

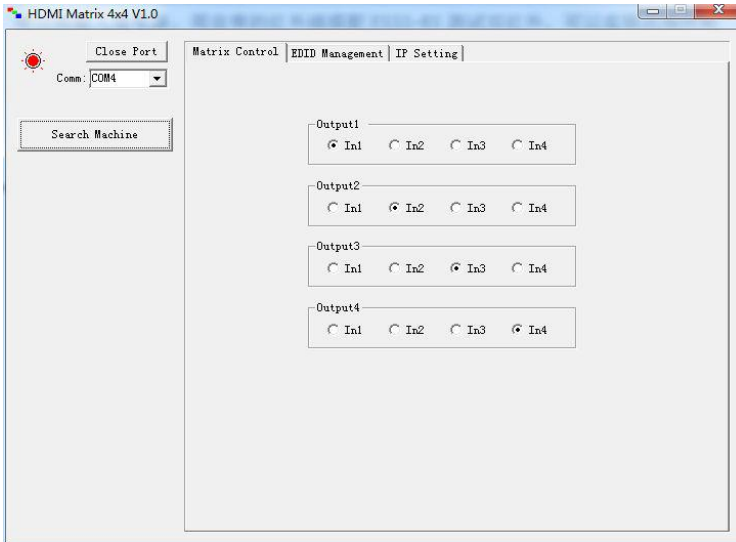
Pressing In1 and In2 simultaneously for 3 seconds to toggle on/off the cascading mode.



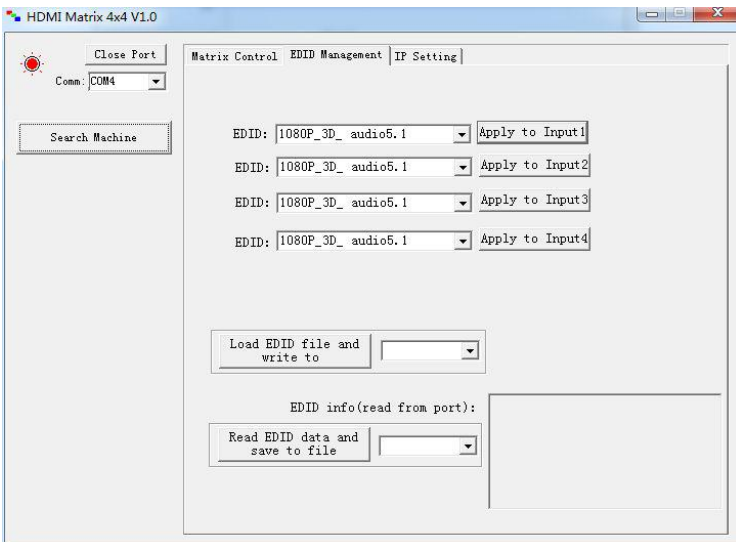
Cascading Mode
ENABLE

8. Software Control

- 1). Connects a computer with MX06 by USB to RS232 cable, open the software and click Search Machine.
- 2). You can control MX06 as following picture showed:

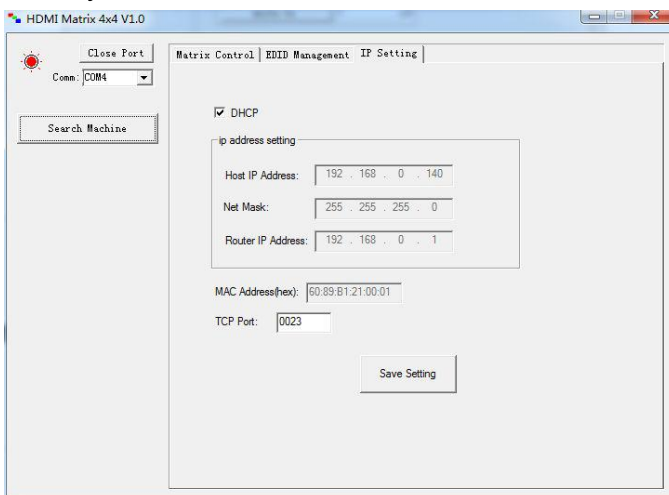


3). Set the EDID of 4 HDMI inputs:

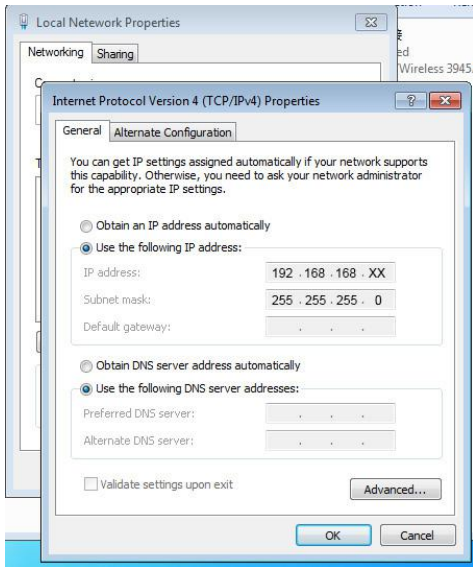


9. IP Control

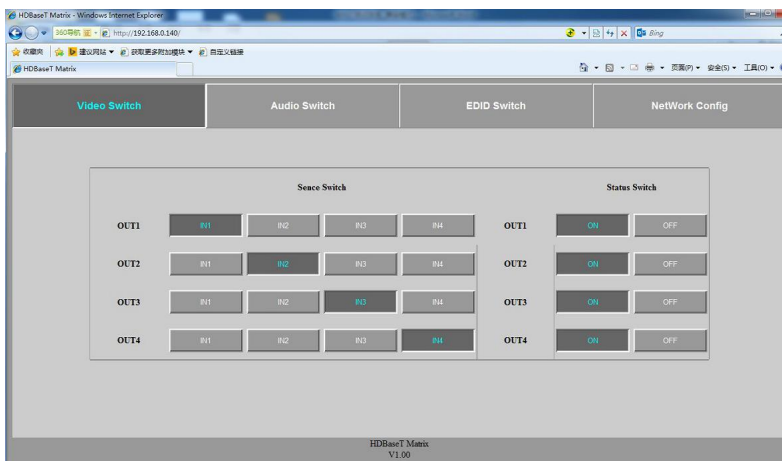
1). Click “DHCP”, then the switch will assign IP address automatically. You can also set the IP address manually.



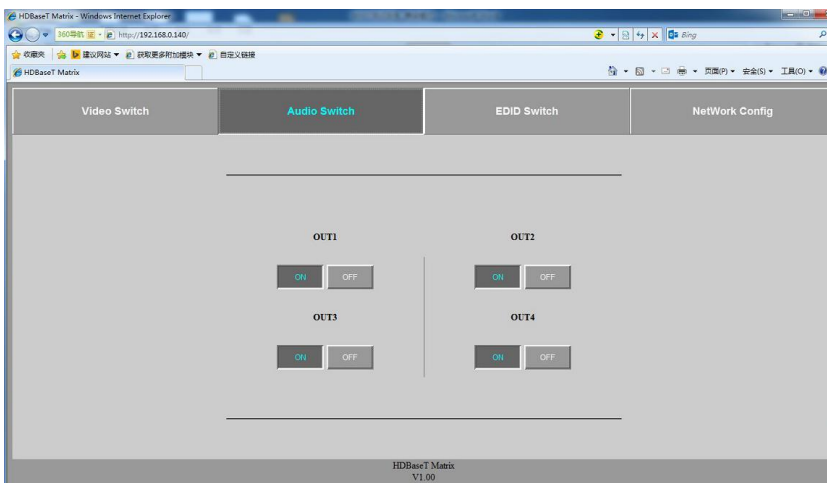
2). If you set the static IP, you need set the IP of computer as below.



3). Open web browser, and enter the IP address you set.



4). Turn on/off the audio:



refurbished product. The decision to repair or replace will be made by the warrantor.

During the "Labor" Limited Warranty period there will be no charge for labor.

During the "Parts" warranty period, there will be no charge for parts. You must mail-in your product during the warranty period. This Limited Warranty is extended only to the original purchaser and only covers product purchased as new. A purchase receipt or other proof of original purchase date is required for Limited Warranty service.

LIMITED WARRANTY LIMITS AND EXCLUSIONS

1) This Limited Warranty ONLY COVERS failures due to defects in materials or workmanship, and DOES NOT COVER normal wear and tear or cosmetic damage. The Limited Warranty ALSO DOES NOT COVER damages which occurred in shipment, or failures which are caused by products not supplied by warrantor, or failures which result from accidents, misuse, abuse, neglect, mishandling, misapplication, alteration, faulty installation, set-up adjustments, misadjustment of consumer controls, improper maintenance, power line surge, lightning damage, modification, or service by anyone other than a Factory Service center or other Authorized Servicer, or damage that is attributable to acts of God.

2) THERE ARE NO EXPRESS WARRANTIES EXCEPT AS LISTED UNDER "LIMITED WARRANTY COVERAGE". THE WARRANTOR IS NOT LIABLE FOR INCIDENTAL OR CONSEQUENTIAL DAMAGES RESULTING FROM THE USE OF THIS PRODUCT, OR ARISING OUT OF ANY BREACH OF THIS WARRANTY. (As examples, this excludes damages for lost time, cost of having someone remove or re-install an installed unit if applicable, travel to and from the service, loss of or damage to media or images, data or other recorded content. The items listed are not exclusive, but are for illustration only.

PARTS AND SERVICE, WHICH ARE NOT COVERED BY THIS LIMITED WARRANTY, ARE YOUR RESPONSIBILITY.